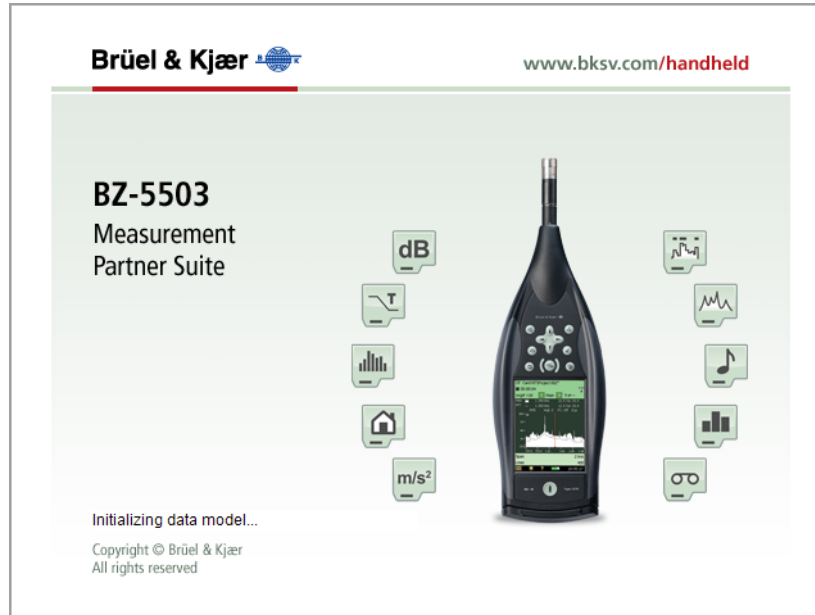


Introduction to the Measurement Partner Suite



[What Can You Do with Measurement Partner Suite?](#)

[About the BZ-5503 Software](#)

[Help for Measurement Partner Suite BZ-5503](#)

What can you do with the Measurement Partner Suite for Hand-held Analyzers BZ-5503?

Measurement Partner Suite is the primary application for processing data measured with Type 2250, Type 2250-L (2250 Light), Type 2250-M (2250 used with MATRON 3 Light) or Type 2270. The application can export to all major Brüel & Kjær Environmental Software applications such as Noise Explorer Type 7815, Evaluator Type 7820/21, Protector Type 7825 or Qualifier Type 7830/31.

It enables you to:

- Setup or control Type 2250/2250-L/2250-M/2270 from a PC
- [Upgrade](#)¹ and [update](#)² software on the instrument or install licenses for the instrument software
- Retrieve data from Type 2250/2250-L/2250-M/2270
- Manage and archive data from Type 2250/2250-L/2250-M/2270
- Post-process your data
- Export data to:

– [Type 7810](#)

Predictor Type 7810, Environmental Noise Prediction and Control Software, is a multi-purpose Windows[®]-based software package for calculating environmental noise. It allows you to calculate and analyze noise from various noise sources such as industry or traffic. With its state-of-the-art calculation power, it can be used for all applications ranging from small-scale impact assessments to mapping of large agglomerations.

1. Software Upgrades: To upgrade from one major version, for example, 3.3, to a new major version, say 4.2, please contact your local Brüel & Kjær representative.

2. Updates are free of charge if you already have a license for a version of the module with the same most significant digit in the version number (e.g., version 1.2 is a free update of version 1.0 and 1.1 if you have a license for version 1.0 or 1.1).

For further information see [Product Data for Predictor Type 7810](#).

– Type 7815

Noise Explorer Type 7815 is a Windows®-based application for downloading and reporting noise and vibration data measured with Brüel & Kjær Sound Level Meters and analyzers.

This software allows you to:

- Format your data for export to spreadsheets, noise mapping software or the Windows® clipboard
- Display/print measurement results in graphical or tabular form

For further information see [Product Data for Noise Explorer Type 7815](#).

– Type 7816

Acoustic Determinator Type 7816 is a Windows®-based application for acoustic engineers who want to find out the sound power level of industrial sources by measuring sound pressure levels in the field. Using data from field measurements, Acoustic Determinator can guide you in the determination of sound power levels of various sources in accordance with a wide range of leading national and international standards, such as ISO 8297 and ISO 3744.

For further information see [Product Data for Acoustic Determinator Type 7816](#).

– Type 7820

Evaluator™ Type 7820 is a Windows®-based application for environmental noise evaluation. It provides versatile tools for analysing measured data from the family of Brüel & Kjær Sound Level Meters, and it is a complete solution for determining Rating Levels according to various national standards.

Evaluator is used in noise profile measurement (to measure industrial, residential and road/rail traffic noise) and in environmental noise evaluation against noise limits according to national and international standards.

For further information see [Product Data for Evaluator Type 7820](#).

– Type 7825

Protector™ is a Windows®-based application for post-processing, simulating and archiving noise exposure data. Designed to work with the family of Brüel & Kjær sound level meters, noise dose meters and sound level analyzers, Protector™ allows you to quickly download sample noise profiles for specific locations or persons. Protector™ can use this data to calculate noise exposure for people or positions under investigation. It calculates noise exposure according to ISO 9612.2.

For situations where only work-point noise measurements are available and workers move about, Protector™ can combine work-point measurements with a profile of a persons movements, to simulate their personal noise exposure.

This software allows you to:

- Make comparisons between measured, calculated, and permitted noise exposure values
- Create a corporate database for all occupational health matters related to noise exposure
- Identify high-exposure areas and jobs for planning noise-reduction measures

For further information see [Product Data for Protector Type 7825](#).

– Type 7830

Qualifier™ is a Windows®-based application for calculating, documenting and reporting sound insulation curves and indexes. Designed to work with the family of Brüel & Kjær sound level meters and analyzers, Qualifier™ allows you to:

- Calculate reverberation time and sound insulation

- Edit measurement results, including manual input of data
- Document and report your measurements

For further information see [Product Data for Qualifier Type 7830](#).

– Microsoft® Excel®

About the BZ-5503 Software

Measurement Partner Suite BZ-5503 comprises two views:

1. [Data view](#)
2. [Maintenance view](#)

Data View

To show the Data view, click on the **Data** tab at the top of the window.

The Data view contains all tasks commonly associated with data in archives or data saved on an instrument. The purpose of the archives is to store data in a secure and effective way, stored in the same structure as used on the instrument. Data are kept in projects organised in job folders, per user. Data view also gives access to data post-processing (if license is available for the particular module).

The following suggestions are considered good practice when using the archives:

- Keep all data related to the same case in the same archive
- Make new archives for major new cases
- Keep data in the archive, even if you export data, then you always have the raw data in a secure way
- Create the archive on a network drive, then your colleagues will also have access to the data
- Create users (for Type 2250/2270 only) and templates in the archive for easy setup of the instrument to a specific case

The following suggestions are considered good practice when organising data on the instrument:

- Create a user for each user of the instrument (Type 2250/2270 only); all data and setups for each user are then effectively secure from being altered by other users
- Create job folders to distinguish between different jobs

To organise larger jobs, or cases, consider creating a user as a “case”; this will ease working on several cases at the same time (Type 2250/2270 only).

See also [How To Organise Templates in Archives](#).

Use the archive as the basis for the following activities with your instrument:

- Transfer and store data from the instrument
- Set up the instrument
- View data
- Export data
- Access Logging or Spectrum post-processing module

Note:

It is strongly recommended that you never change an existing archive file structure with Windows® Explorer.

Maintenance View

To show the Maintenance view, click on the **Maintenance** tab at the top of the window.

The Maintenance view contains all the tasks commonly performed on the instrument. The purpose of these tasks is to organise data and users (Type 2250/2270 only) on the instrument, and to install new software or licenses.

Help for Measurement Partner Suite BZ-5503

Help is provided with Measurement Partner Suite BZ-5503. Press **<F1>** at any time during use of this program to get detailed help on the current task. If required, a print-friendly PDF version is also available on the Environmental Software DVD (BZ-5298).

Friday, April 20, 2012 © Brüel & Kjær

How To...

Type 2250/2250-L/2250-M/2270 software modules are collected together in a 2250 Software Package. The software packages (available at the time of installation) were copied to your PC when you installed BZ-5503. Later versions of these software packages may now be available on the support site www.bksv.com. All software modules are installed when you install a package - you cannot pick out a single module from a package and install it separately.

[...Fulfil Your BZ-5503 License](#)

[...Connect an Instrument](#)

[...Install an Application](#)

[...Install a License for an Instrument Application](#)

[...Transfer Data from Your Instrument to an Archive via USB](#)

[...Transfer Data from an SD-card \(or a CF-card\) in a PC Card Reader](#)

[...Transfer Data from or Control an Instrument via LAN/WLAN](#)

[...Export Data from Your Instrument to External Software \(Type 7810/12/15/16/20/25/30, Microsoft Excel or Pack-and-Go\)](#)

[...Create Your Own Master Excel Files](#)

[...Export to a Customized Master Excel File for Reporting](#)

[...Create New Users on your Instrument](#)

[...Backup Archives](#)

[...Import Pack-and-Go Files](#)

[...Organise Templates in Archives](#)


To Fulfil Your BZ-5503 License

Before you can use the post-processing modules of Measurement Partner Suite, you need to fulfil your license online.

License Fulfilment Procedure

In order to complete license fulfilment for BZ-5503, the software must be installed on the PC on which it will be used. Steps 1 – 6 below can be performed on a PC that does not have the software installed. Steps 7 and 8 require software installation.

1. Start by doing one of the following:


- Open the software and select **Options** (click ) , **License** and click **Fulfil**
- Open an Internet browser and go to <http://license.bksv.com>.

2. In the *Login* field, enter your Authorisation Code from your Authorisation Card and click **Submit**.
3. In the *Host ID* field, enter your Instrument Serial Number (see the back of your instrument).

Note: Demo licenses do not require serial numbers. Continue to step 4


4. Click **Fulfil**.
5. Check that all information is entered correctly, then click **Confirm**.
6. Click **Save to File** to save the license file (*.lic) to a disk drive.

If using another PC, transfer the file to the PC that has the environmental software installed. If the software is not yet installed, do it now.

7. Open the software, if it is not already open. Go to **Options** (click ) and select **License**.
8. Click **Browse** to navigate to the license file that was saved in step 6. Click **Open**.

Your newly added license will now be added to the *License* list and you can start using the software.

To Connect an Instrument

1. Open your BZ-5503 application, click on the *Maintenance* button at the top of the window, and click  to show the Instrument view.
2. Switch on your Type 2250/2250-L/2250-M/2270 instrument and wait a few seconds for the instrument to go through its initialisation and start-up routine.
3. Connect your instrument via:

USB Cable to PC

4. Connect the instrument directly to the PC via USB and wait for the instrument to be recognised automatically. This can be confirmed by checking that the instrument serial number appears in the INSTRUMENTS node:



LAN or WLAN


4. Connect an instrument or instruments to the network using:
 - o An Ethernet cable connected directly to the LAN socket of Type 2270
 - o An Ethernet CF-card (UL-1016) inserted in the CF-slot of Type 2250, 2250-L, 2250-M or 2270
 - o A CF WLAN card inserted in the CF-slot of Type 2250, 2250-L, 2250-M or 2270
 - o A wireless Ethernet bridge



The analyzer supports TCP/IP (Transmission Control Protocol/Internet Protocol) on the LAN.

The analyzer must have a unique address on the network (an IP address), which consists of four sets of three-digit numbers, e.g., 010.116.121.016. Typically the instrument is set up to automatically obtain the IP address. Consult the User Manual and local IT administrator if there is a problem.

If you use WLAN, network name and security settings must be specified, please consult the User Manual.

Typically no extra settings are necessary for BZ-5503 to connect to instruments on the same LAN as the PC.

When an instrument is connected to the LAN, it is automatically detected by BZ-5503. If the instrument is not found, then either it is not turned on or there is a router between the instrument and the PC. If not found, you can try to use the Refresh button  on the toolbar to re-search for instruments.

5. Click  to show the Instrument view and check the checkbox for the instrument to which you wish to connect. All instruments detected on the network are listed here. Click  on the toolbar to search for instruments on the network.

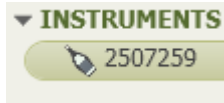
An instrument can only be connected to one version of BZ-5503 at a time. If you are not using the instrument anymore, you can disconnect by closing the online display and unchecking the instrument in the INSTRUMENTS node. This means other people can now connect to the instrument. The instruments view indicates which instruments are in use by displaying *In use* next to them. If an instrument is in use, you cannot connect to it before the other user disconnects.

Note:

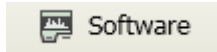
Connecting to another instrument in the Instruments list does not disconnect the previously selected instrument. You must explicitly disconnect the instrument.

To Install an Application

1. [Connect your instrument to BZ-5503.](#)
2. Select the instrument by clicking on the serial number in the INSTRUMENTS node.

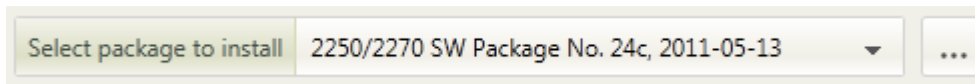



3. Click the **Software** tab at the bottom of the application window:



to see the table showing the installed versions of the software modules.

4. Select the 2250/2270 Software Package to install:



You can click  to browse to the software package location; the default location is:
64-bit Windows: C:\Program Files (x86)\Common Files\Bruel and Kjaer\SWP

32-bit Windows: C:\Program Files\Common Files\Bruel and Kjaer\SWP

It is important to choose the SWP folder and not the underlying folders otherwise software packages will not be found.

5. If you are installing on an instrument with hardware version 1 to 3, select up to three languages (in addition to English) for the user interface.
If you are installing on an instrument with hardware version 4, no language selection is possible – all available languages are installed automatically.

6. Click .

The installation will take several minutes. The instrument will automatically restart when the installation is finished.

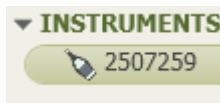
Note:

- If you are upgrading software, your preferences are maintained, but you will have to adjust the touch screen and select your preferred language and time zone
- If you are downgrading software, templates are reset (i.e., overwritten)

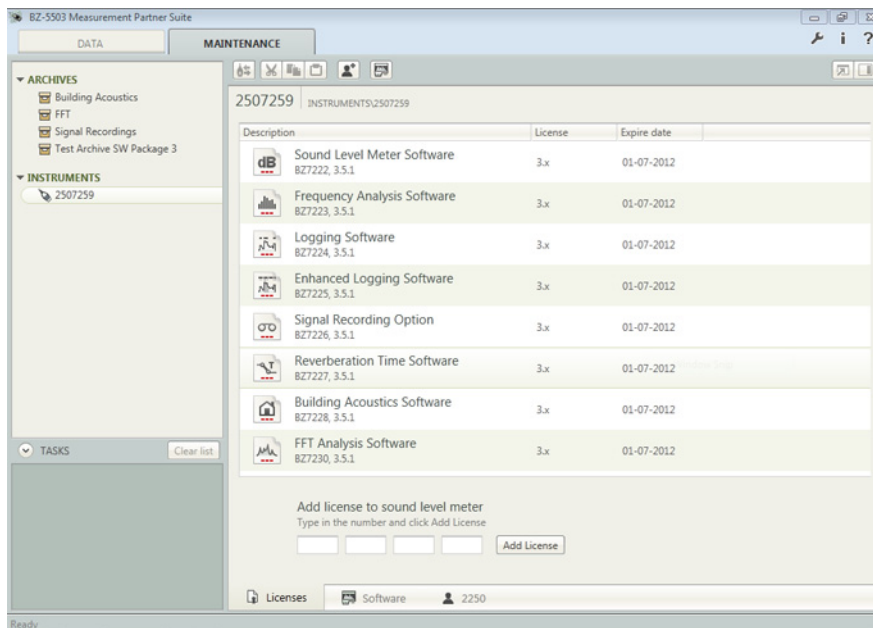
A valid license is required to run an application on the instrument. If you have purchased your instrument together with the application(s), the relevant license(s) will come pre-installed on the instrument. If you purchased a separate application for your instrument, you must install the license on the instrument.

To Install a License for an Instrument Application

1. [Connect your instrument to BZ-5503.](#)
2. Select the instrument by clicking on the serial number in the INSTRUMENTS node.



3. On the right side, click the **Licenses** tab to show the installed versions of the software modules and the licenses already available.

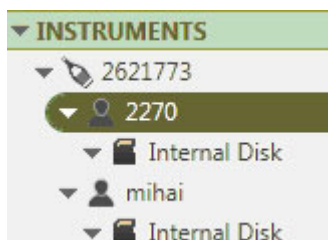


You will have received a License Authorisation Card from Brüel & Kjær together with the application.


4. Enter the 16-character license code (from the certificate) into the four placeholders at the bottom of the License view.
5. Click and the license will be installed. You can now use the application.

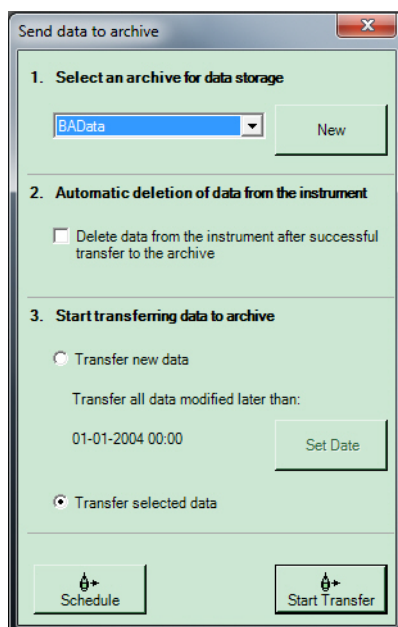
To Transfer Data from Your Instrument to an Archive via USB

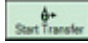
1. [Connect your instrument to BZ-5503.](#)
2. Make sure you are on the DATA tab of BZ-5503 and click the instrument serial number on the instrument you wish to transfer data from, then click on a user or disk (Internal Disk, SD-Card or CF-Card).



Basic Data Transfer



3. Click  (on the toolbar) and the send data to archive dialog will pop up.



4. Select an archive for data storage in the *Select an archive for data storage* section.
5. Select *Automatic deletion of data from the instrument* (and you will not have to clean up the data on your instrument afterwards).
6. Select **Transfer new data** and you will transfer all data saved since your last transfer. **Set Date** lets you change the date as required.
7. Click  and the data will be transferred into the selected archive. Transferred data will be stored in the archive using the same user and job folder structure as on the instrument.

Advanced Data Transfer

3. Navigate to the data in the Instrument you want to transfer by using the tree. You can select multiple job folders and/or projects in the list view.

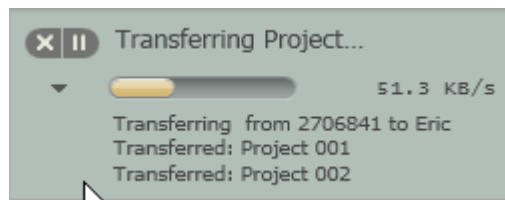
4. Right-click on the selected data and select **To Archive** (or click  on the toolbar). Select an archive for data storage in the *Send data to archive* wizard.
5. Select **Transfer selected data**.
6. Click  and the data (including the data in subfolders) will be transferred into the selected archive using the same user and job folder structure as on the instrument.
7. Repeat steps 3 – 6 until you have transferred all required data.
8. Delete the projects no longer required on the instrument by right-clicking on the project(s) and selecting **Delete** from the context menu that appears.

Advanced Using Drag and Drop

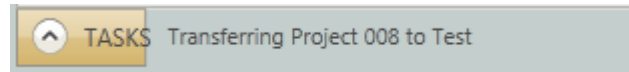
3. Navigate to the data in the Instrument you want to transfer by using the tree. You can select multiple job folders and/or projects in the list view.
4. Drag and drop data to its final destination in an already created archive.
5. Navigate to the archive to which data was transferred to find your data again in the Archive Explorer.

Pausing Data Transfer

During data transfer, progress is monitored in the TASKS area below the tree:

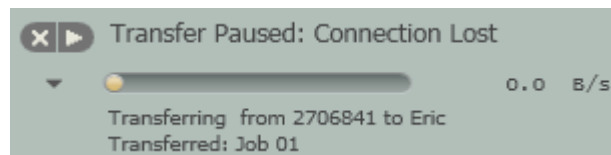


The task area can be minimized, in which case progress is indicated as shown below:



The button  expands/collapses the TASKS area.

If your instrument has version 4 software, you can avoid the risk of having to restart downloads of large measurement projects due to an unstable Internet connection. With BZ-5503's resumable download feature, the software automatically pauses and restarts downloads if your connection fails:



To Transfer Data from an SD-card (or a CF-card) in a PC Card Reader

1. Open the BZ-5503 application and select the **DATA** tab at the top of the window to show the Archive view.
2. Plug the SD/CF-card into the card reader on the PC.

REMOVABLE DEVICES node will appear in the Archive Explorer with the data from your instrument.




3. Select the job folders and/or projects on the removable disk and either:
 - o Drag them to the desired archive, or
 - o Right-click one of the selected folders and select Cut (or press **<Ctrl+x>**) or Copy (or press **<Ctrl+c>**), then right-click in the archive where you want the data and select Paste (or press **<Ctrl+v>**)
4. Delete the projects no longer required on the removable disk.

To Transfer Data from or Control an Instrument via LAN/WLAN

Using INSTRUMENT Node

1. [Connect your instrument to BZ-5503.](#)
2. Right-click the instrument serial number and select **Online display**.

Using the Toolbar

1. Click  on the toolbar.
If only one instrument is connected, the online display will automatically pop up.
If multiple instruments are connected a list of instruments will pop up.
2. Select the desired instrument(s) and click **OK**.

To Export Data from Your Instrument to External Software (Type 7810/15/16/20/25/30, Microsoft® Excel® or Pack-and-Go)

Type 2250, 2250-L, 2250-M, 2270 data can be processed by BZ-5503 itself and by the following external tools:


- Predictor Type 7810
- Noise Explorer Type 7815
- Acoustic Determinator Type 7816
- Evaluator Type 7820/21
- Protector Type 7825
- Qualifier Type 7830/31
- Microsoft® Excel®
- 7821 Evaluator Light for 2250 Light and 2250 MATRON 3 Light data only
- 7830/31 for 2250/2270 Reverberation Time and Building Acoustics data only
- PULSE ASCII for FFT data only

Note:

You cannot open instrument data directly from the external software.

Transfer the instrument data to an archive on the PC using Measurement Partner Suite BZ-5503 (see [USB](#), [PC card reader](#) or [network](#) for specific instructions). Then you can export data from the archive to any of the types mentioned above, or to Excel®. Export is controlled by your BZ-5503 software.

To Export Data from an Archive to External Software

1. Open BZ-5503 and click the **DATA** tab at the top of the window to show the Data view.
2. Select the data to export in the Archive Explorer (you can select multiple projects and/or Job folders in the list view on the right).
3. Right-click the selected data and select **Export** from the drop-down (or click  on the toolbar). Select the required type of export in the Export control panel.

If you want to export to Microsoft® Excel (see [Export Data to Excel](#)), ASCII, XML or Pack-and-Go, click **Next** and specify what to export (if required) and a destination file for the output.

4. Click **Finish** to export the data. The external software will automatically be started and display the result.

To Create Your Own Master Excel Files

1. Select the data for export ([1st screen of the Export wizard](#)).
2. Export the selected data, which creates an Excel® output file ([2nd screen of the Export wizard](#)).
3. Use that file to create your own Master Files for filtering or reporting by deleting the data you want to filter away and/or adding the report features (graphs, tables, etc.,) you want ([3rd screen of the Export wizard](#)).

To Export to a Customized Master Excel File

Export a Complete Set of Data

Use the [Export wizard](#) to select the data for export and the EmptyMaster.xls/EmptyMaster.xlsx as the Master File. This is the file used when you want export the complete set of data. It consists of an empty Excel® file.

Filtering Data for Export

1. Use the [Export wizard](#), select **Launch Excel after export** and export the complete set of data.
2. After Excel® has opened, delete the unwanted data columns (parameters).
3. Delete all data rows (except row 1, the header row).
4. Save the Excel® sheets as MyFilter.xls or MyFilter.xlsx depending on the Excel® version together with the other Master Files.
5. Export your data using MyFilter.xls(x) as the Master File – the resulting Excel® file will contain only the required sheets and parameters.

Note:

The filter must match the measured data. If for example, LAeq and LCeq appear in the list of filtered information and you use the filter on data measured with Broadband Frequency Weighting set to AZ instead of AC, then you will only get LAeq. LCeq will not be present in the data and LZeq has not been set in the filter. If you want LZeq to be present together with LAeq, then make a new filter.

Note:

The filter must match the selected Export Language in [Options](#), Language.

Reporting

1. Export complete data or filtered data as shown above, naming the Excel® file (as an example) MyReport.xls.
2. Add one or more sheets containing calculated data, tables and graphs.
3. Create links between the report sheets and the data sheets (if you want to delete the data rows in the data sheets afterwards, use the **Clear Contents** option from the **Edit** menu, then Excel® will preserve the links to the empty cells).
4. Save MyReport.xls with the other Master Files.
5. Export your data using MyReport.xls as the Master File – the resulting Excel® file will contain the required data and reports.

Note:

It is essential that the filter matches the measured data.


To Create New Users on Your Instrument

Note: This topic is for Type 2250/2270 only.

Type 2250/2270 can handle more than one user of the instrument. Each user has their own set of preferences, templates and jobs/projects – completely invisible to other users. This can also be very useful when organising large jobs, or cases; you can separate the cases completely from each other by handling each case as a user.

The transducers, the calibration setup and the calibration histories of the transducers are common to all users/cases.

To Create a User/Case on the Instrument

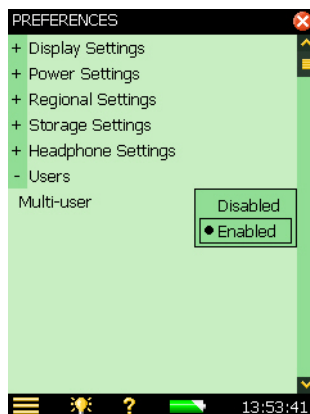
1. [Connect your instrument to BZ-5503.](#)
2. Select the instrument in the tree view.
3. Click the *Add User* button  on the toolbar, or right-click the instrument and select **Create User**.
4. Type the name of the new user/case in the *Create User* dialog.
5. Type in the name of the new user, select whether the settings (preferences and templates) for the new user will be the default settings or the same as the settings of a user already defined on the instrument.
6. Click **Create**.

Note:

New users can also be created in the archive (using the *Data* tab) and then transferred to Type 2250/2270.

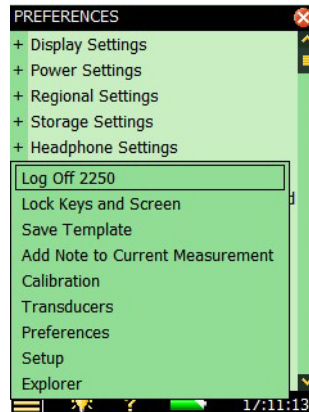
To Enable the New User/Case

1. Set the *Multi-user* parameter to *Enabled* on the instrument (under *Users* in the **Preferences** menu):



To Switch Between Users/Cases

1. Select *Log Off* <user name> from the Main Menu on Type 2250/2270:




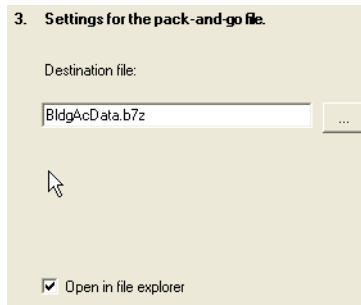
2. Select the new user name in the login screen and tap *Login*.

To Backup Archives

The archives containing the instrument data have typically been created on the local disk of your PC, or on a disk drive on your company network.

If you want to backup an archive, use BZ-5503 as follows:

1. Locate the path to the archive you want to backup.
2. Click the Export button  on the toolbar.
3. Click **Next** in the Export dialog, which will default to *Export to Pack-and-Go file*.
4. Select a destination for the backup:



5. You can create a CD or DVD with your backup.

If you want to use your backup again:

See [How to Import Pack-and-Go Files](#)

To Import Pack-and-Go Files

Files/backup archives that have been exported to Pack-and-Go files can easily be imported.

BZ-5503 Not Running

If BZ-5503 is not running, navigate to the Pack-and-Go file in Windows Explorer and double-click on the file.

BZ-5503 will start and the file will appear in Archives.

BZ-5503 Running

If BZ-5503 is running, navigate to the Pack-and-Go file in Windows Explorer and drag-and-drop the file in the tree.

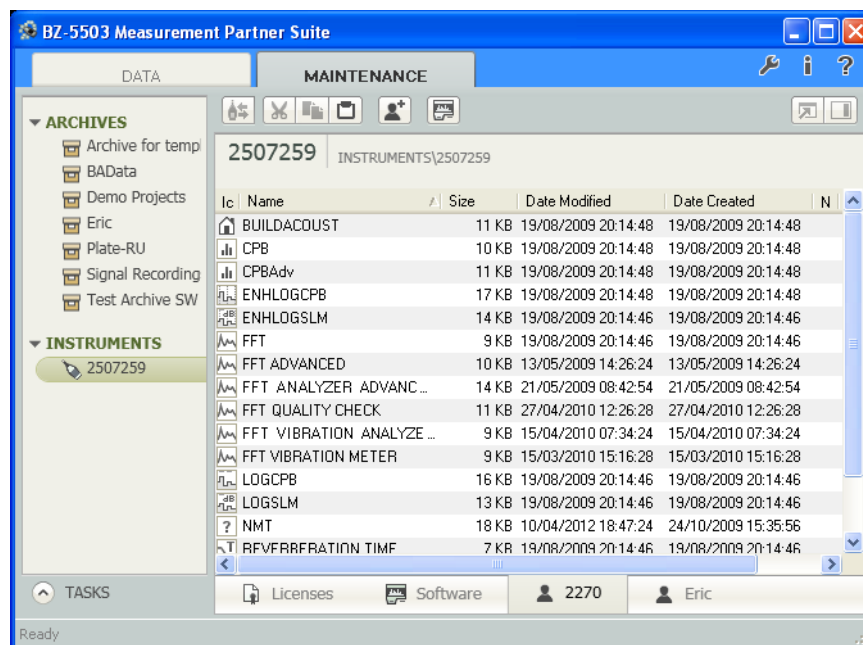
To Organise Templates in Archives


Templates that are in archives can be copied to any number of instruments if the same template setup is required for the instruments. This means that BZ-5503 can be used as an backup archive for templates in case they are deleted from or modified in the instrument:

1. Configure the templates on the instrument according to how you want the data to be saved.
2. Create a [new archive](#) (one in which you will not store any data) in BZ-5503 and add a [default user](#) to this archive.

Default templates provided with BZ-5503 are added to the user, so before you go on to the next step you may want to delete these. However, there must always be at least one template, so you can delete all but one and then right-click, select **Rename** and give it a meaningless name. You can then delete it later (after step 3).

3. Copy the templates you have created on the instrument to the archive you have created in BZ-5503 by selecting the templates you want to copy, for example from a user tab of the MAINTENANCE tab (2270 in the screenshot below):



To do so use **<Ctrl + A>** or a combination of **<Ctrl>**, **<Shift>**, click to select the templates. Then right-click and select **Copy**, or [To Archive](#), or click .

You now have backup templates for your instrument that can be copied to the instrument, or any other instrument of the same type, as required. Note that Types 2250 and 2270 use different templates, so if you are using both, you should create two new archives or two default users (2250 and 2270) in your archive.

As added security, you can also [backup this archive](#) by exporting it to a Pack-and-Go file.

Note:

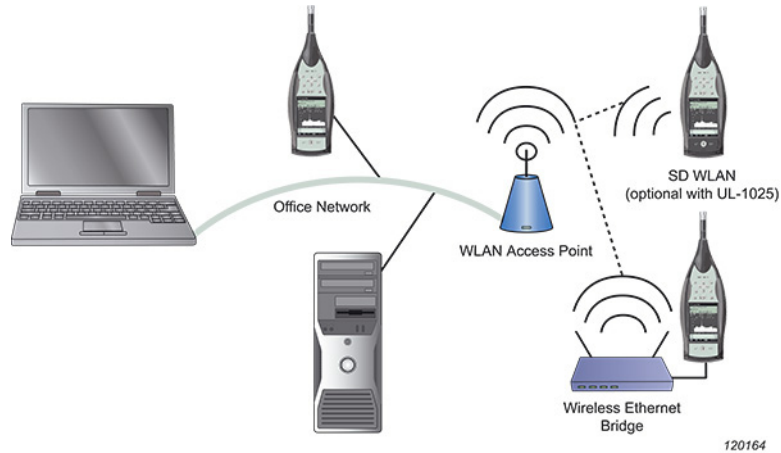
You can clone templates using **Copy/Paste** in the same archive. For example, if you copy FFT Analyzer, the pasted template will be called FFT Analyzer (0). You can then right-click and select **Rename**.

Networks

[Connect to a Local Area Network \(LAN\) or Wireless LAN \(WLAN\)](#)

[Connect to an Instrument Through a Router](#)


Connect to a Local Area Network (LAN) or Wireless LAN (WLAN)



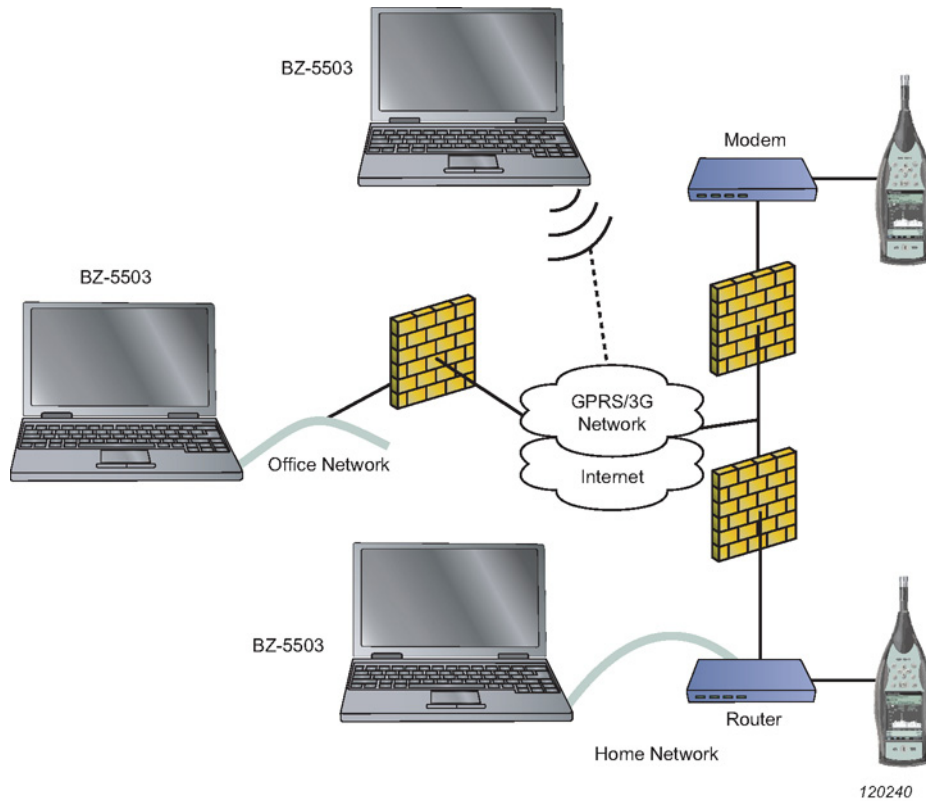
Set up the Instruments and Measurement Partner Suite BZ-5503

See [Connect an Instrument](#)

Detection Problems

Depending on the type of firewall, the VPN and the security level of the network, the detection of the instrument on the network cannot be made automatically in some cases. This could mean that the instrument is not visible in the Instruments list. In this case, you need to specify the IP address of the instrument, and then BZ-5503 will search for the instrument at this address. Click  and go to the *IP Addresses* tab.

Connect to an Instrument Through a Router



Setting up the Instrument

The instrument is connected to the Router/Modem using an Ethernet cable connected directly to the LAN socket of Type 2270, or connected via an Ethernet CF-card (UL-1016) inserted in the CF-slot of Type 2250, 2250-L, 2250-M or 2270.

The instrument needs a static IP address; however, you can typically set the instrument up to automatically obtain the IP address, and then set up the router to reserve a static IP address for the instrument by using its MAC Address in the router's DHCP table.

Setting up the Router

In addition to the settings needed for the router to access the WAN (Wide Area Network), the Internet (please consult the user manual for the router and your Internet Service Provider) and the settings needed for setting up the LAN, a number of steps are necessary to allow access to the instrument from the Internet.

Please consult the user manual for the router, but the main steps are as follows:

- Set up the router to assign/reserve a fixed IP address for the instrument. Many routers handle this using a DHCP reservation list, or a Static DHCP list. Please add the instrument to this list and then select an IP address for it. Often the instrument must be identified by either the host name of the instrument (this is BK2250-nnnnnnn or BK2270-nnnnnnn, where nnnnnnn is the serial number of the instrument) or by the MAC address of the LAN adaptor (the MAC address is available under Preferences on the instrument). If the router can reserve a static IP address for the instrument, then the instrument can keep the "Set IP Address = Automatically" – otherwise you need to manually set the instrument up for an IP address in the range allowed by the router
- Set up the router to forward port 80 (TCP) to the IP address of the instrument (the IP address set in the first

step). This is typically done in a section called "Port Forwarding", "Network Address Translation (NAT)" or "Applications & Gaming"

- The router needs to have a static external IP address – this is arranged with your Internet Service Provider. Often this is the standard setting. If you don't know the address, then you can look it up by using a PC connected to the LAN behind the router. Use the web-address "www.myipaddress.com" or similar services

Additional Settings for the GPRS/3G Router

In addition to the settings needed for the router to phone the Network Operator (please consult the manual for the router) and a SIM-card with Data subscription, you need a static and global IP address for the GPRS/3G connection. Please consult your Network Operator.

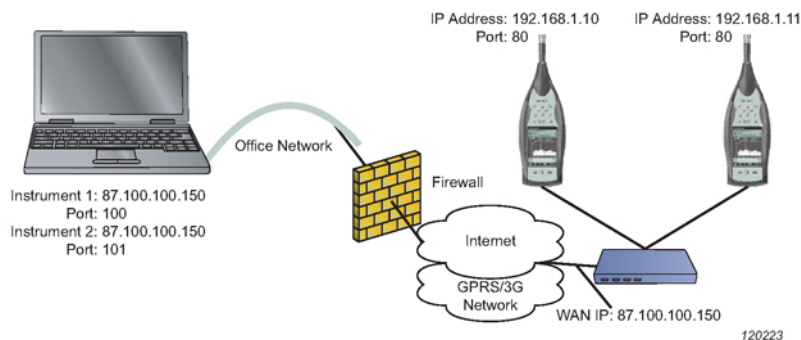
If it is not possible to get a static IP address for the router, then the router will get an IP address every time it connects to the network through GPRS/3G.

Note:

If the router does not support DDNS (Dynamic DNS) then one can be setup on the instrument. Please consult the instrument user manual.

Setting up Multiple Instruments Behind a Router

In order to connect multiple instruments behind a router and be able to communicate with them, you must have a router that can convert ports from the WAN side to the internal side of the network.



The scenario shows two instruments behind a router. The router has two interfaces, an internal interface where the instruments are connected to and have the IP addresses 192.168.1.10 and 192.168.1.11 and its WAN interface where the router in this example has the external IP 87.100.100.150. To configure the router for following scenario, see the [NAT table](#), which shows the port forwards that needs to be done in order to be able to connect to the instruments from BZ-5503.

NAT table

Application name	Port from	Protocol	IP Address	Port to
Type 2250 – Instrument 1	100	TCP	192.168.1.10	80
Type 2250 – Instrument 2	101	TCP	192.168.1.11	80

Note:

For BZ-5503 to detect the above two instruments, the static *IP Addresses* tab in **Options** must have the settings given in the [BZ-5503 settings table](#).

BZ-5503 settings

Addresses	Port	Description
87.100.100.150	100	Instrument 1
87.100.100.150	101	Instrument 2

Set Up BZ-5503

The PC running BZ-5503 needs access to the Internet, either via the office network, or via a GPRS/3G connection. With BZ-5503 you need to specify the static external IP address of the router. The address is set up in the



Options IP Addresses tab.

Additional Settings for DDNS

If the address is static, then you just need to specify the address.

If the address isn't static, then you need to insert the 'hostname' specified at the DDNS service provider, e.g., 'MyBK2250.dyndns.com'. BZ-5503 will then get and use the correct IP address from the DDNS service provider.

Port Numbers

When connecting to a PC or instrument on an IP address, then it is done through a port with a number between 0 and 65535 (several of these numbers are reserved).

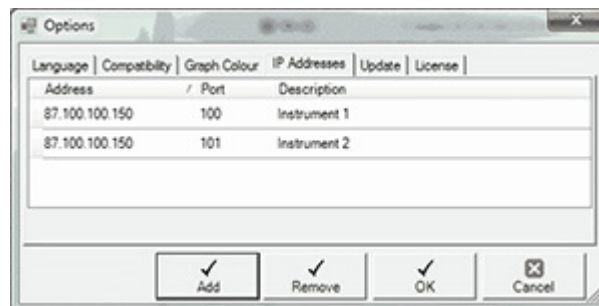
BZ-5503 uses default port 80 to connect to the instrument. This port is also used for accessing the Internet using Internet Browsers. The main advantage of using this port is:

- On company networks, all ports are often closed (for security reasons) with the exception of a few. One of the exceptions is port 80; otherwise, Internet access would not be possible. You will then be able to access the Type 2250/2270 from a PC on a restricted company network

The drawback is:

- If the network behind the router contains a Web server, all traffic into the router on port 80 is forwarded to the Web server, thus Type 2250/2270 cannot be reached

In case you cannot use the default port setting in BZ-5503, the default port can be changed in BZ-5503 to another port in the **Options IP Address** tab in BZ-5503.



Note:

A router is required when connecting to an instrument where the default port is not used. The router must support NAT and conversion of ports so that an incoming port X can be forwarded to port 80 on the instrument. This is because the instrument uses port 80, which is fixed and cannot be changed.

Example when port 80 is available

From a company network you would like to connect to a Type 2250 that is connected to a small 'home office' network behind a router.

- Type 2250 is setup for 'Set IP Address = automatically' in Preferences, Network
- The DHCP setting for the router has already been setup for generating IP addresses in the range from

192.168.0.100 to 192.168.0.199. Select an address not used already (e.g., 192.168.0.150) and reserve it for the Type 2250 in the DHCP Reservation List, or the DHCP Static List

- Setup router to forward port 80 to the IP address 192.168.0.150
- The external address of the router is 152.115.123.456. This address is inserted in BZ-5503 in **Options IP Addresses** tab

Example when port 80 is not available

From a company network you would like to connect to a Type 2250 that is connected to a small 'home office' network behind a router but port 80 is used for an server or something else:

- Type 2250 is setup for 'Set IP Address = automatically' in Preferences, Network
- The DHCP setting for the router has already been setup for generating IP addresses in the range from 192.168.0.100 to 192.168.0.199. Select an address not used already (e.g., 192.168.0.150) and reserve it for the Type 2250 in the DHCP Reservation List, or the DHCP Static List
- Set up router to forward port X (where X is an port between 0 and 65535) to port 80 to the IP Address 192.168.0.150
- The external address of the router is 152.115.123.456. This address is inserted in BZ-5503 in **Options IP Addresses** tab together with the port X that has been chosen

DDNS

DDNS is a network service that provides the capability for a router to notify a domain name server to change, in real time (ad hoc), the active DNS configuration of its configured 'hostnames' and addresses.

If the router supports DDNS, then it can be configured to notify the DDNS service provider each time the IP address of the router is set or changed. When BZ-5503 connects to the instrument through the router, then the IP address of the router must be specified. However, the IP address is only known to the router itself and the DDNS service provider. BZ-5503 then looks up the address at the DDNS service provider.

There are several DDNS service providers available, some providers have free services. For example, a typical world-wide DDNS service provider is 'dyndns.org'.

You need to make an account at a DDNS service provider, specifying a 'username' and a password for the account and a 'hostname' (e.g., 'MyBK2250.dyndns.com') identifying the router.

Instruments

[Instruments Node](#)

[Transfer Data from the Instrument to the Archive](#)

[Create Users on Instrument](#)

[On-line Display](#)

Instruments Node

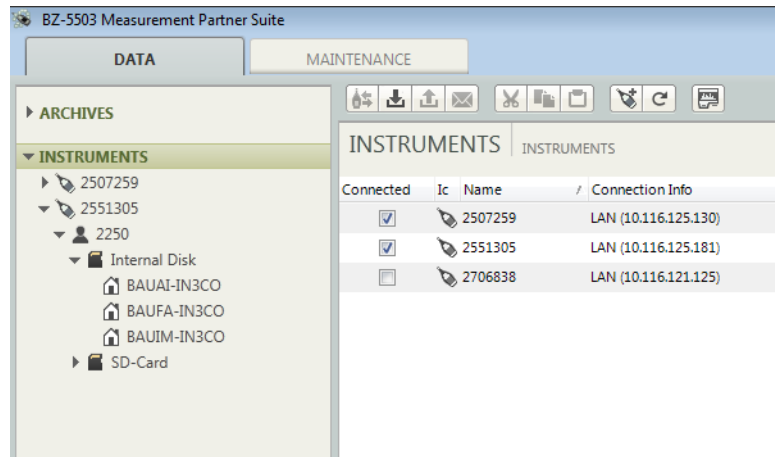
The INSTRUMENTS Node allows you to connect and disconnect instruments, and to view or select jobs/projects on connected instruments, for further action.

Tree View

The tree view of an instrument allows you to quickly navigate to the job folder and project you need.

List View

The list view (to the right of the tree view) allows you to sort the data and see more detail.



Instrument

When you connect your instrument to the PC via the USB cable, the instrument is automatically detected, and the serial number and location are displayed in the Instruments list view when you click the INSTRUMENTS node. If you connect more than one instrument, or connect using LAN, this is where you select the instrument(s) you wish to connect to – use the checkboxes in the *Connected* column or right-click and select **Connect Instrument**. The *Location* is set up on the instrument in *Preferences, Network Settings*.

Note:

Connecting to an instrument using LAN locks the instrument from being connected to/from other PCs on the network. If an instrument is in use, the *Status* column reads *In Use*. Uncheck the checkbox or right-click and select **Disconnect Instrument** to free the instrument again.

User

If you have defined more than one user on the instrument (Type 2250/2270 only), then navigate to the user whose data you wish to view. If you need to show all users' data, expand all users in the tree.

Context Menus

To help you manage your data in this view, various context menus pop up when you right-click on an item. For instance, there are menus for each of the tree nodes, each of your job folders and each of your projects. Each of these menus has various options, some of which may, or may not be available, depending on which part of the tree you are in. Most tasks and functionality on instruments can be activated from the context menus.

While some of the options on these context menus are specific to this BZ-5503 software and need explanation (see below), some are common options found in most software packages, such as **Expand, Collapse, Explore, Cut, Copy, Paste, Delete** and **Rename**, which are self-explanatory.

Context Menus Specific to BZ-5503 Software

On-line Display: Use this option to start the on-line display, which allows you to view the instruments display remotely on your PC and use the simulated keyboard to control measurements and data.


Create User: (Type 2250/2270 only) Use this option to create a new user on the instrument by typing the new name into the entry field provided. Select which method you want to use to create the new user, you can choose either the 'default' user, or clone an existing one by selecting it from the user drop-down list. Once you have selected what you want, click the *Create* button.

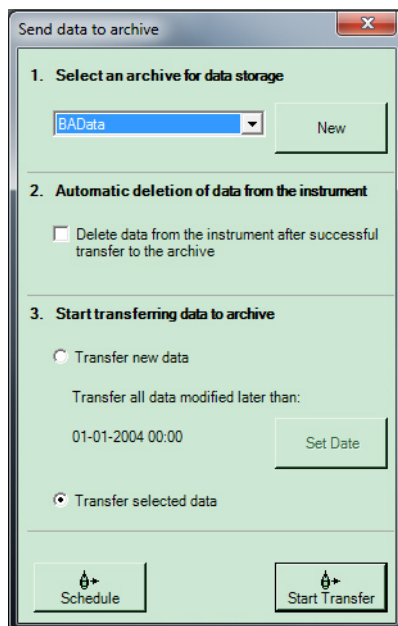
To Archive: Use this option to transfer the currently selected data from your instrument to the archive. Select an archive from the drop down list that appears in the pop-up window, or click the *New* button to create a new archive. Check the checkbox if you want to delete the data from the instrument once it has been transferred to the archive. Click the *Start Transfer* button to start the process.

Create Job Folder: Use this option to create a new job folder in the archive. Type the new name into the entry field of the window that pops up, then click the *Create* button to add your new folder to the archive.

Disconnect Instrument: Use this option to disconnect the connection between the PC and the instrument.

Transfer Data from the Instrument to the Archive

Right-click on the data you want to transfer and select **To Archive** from the pop-up menu (or press  (*To Archive/Instrument*) on the toolbar) to transfer projects and/or settings from the instrument to the selected archive, using the *Send Data to Archive* wizard:



The transferred data are stored in the archive using the same user and job folder structure as on the instrument. However, no distinction is made in the archives between memory devices in the instrument (i.e., data in a 'Job001' folder' on a SD-card and data in a 'Job001' folder on the internal disk will all be stored in 'Job001' in the archive). During transfer of data, if a project with the same name already exists in the archive, a dialog appears, asking you to rename it.

The panel is split into 3 sections:

Section 1: allows you to choose an archive for storing your data, or create a new one if required.

Section 2: allows you to delete the data from the instrument once it has been successfully archived (if you check the checkbox). If you do not check the checkbox, the data you transferred remain on the instrument.

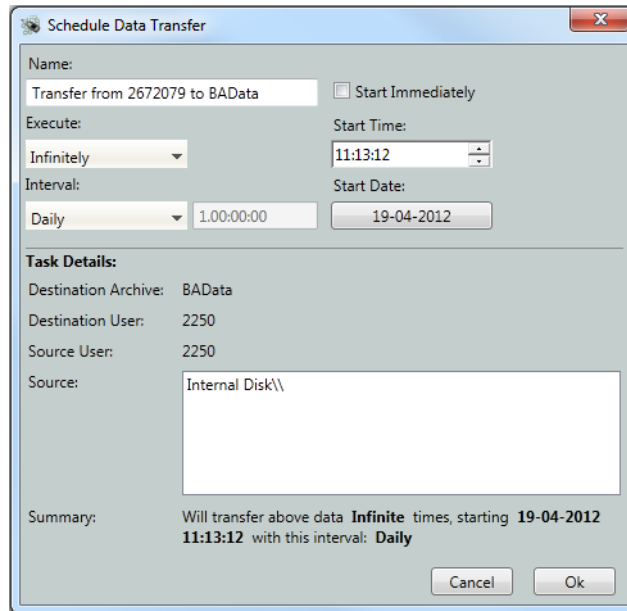
Section 3: allows you to choose between transferring selected data (i.e., data selected in the explorer tree/list view) or transferring all data modified by the current user after the specified date. **Set Date** lets you change the date, if required.

Once you have selected the data to transfer, click **Start Transfer**.

Scheduled Transfer

Scheduled transfer can be used to transfer data at a specific time, with recurring transfer at a set interval. For example, if you are using Enhanced logging and produce a project every day, scheduled transfer can be set to retrieve that measurement automatically every day as long as long as BX-5503 is running and the instrument is available.

The **Schedule** button in the lower left of the dialog only appears if you transfer data at Job level or higher. It opens the *Schedule Data Transfer* dialog.

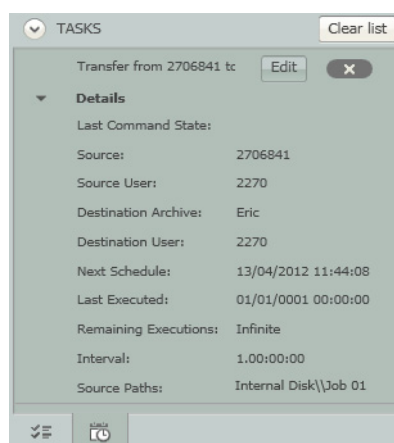


1. Select *Start Immediately* or enter a *Start Time* and select a *Start Date*.
2. Set *Execute* to **Infinitely**, or to **This many Times**: and enter the number of times.
3. Set the *Interval* at which to transfer data. If you select **Custom**, the format is Days:Hours:Minutes:Seconds
4. Check the details and click **OK**.

The schedule appears in the TASKS area below the tree view and you can view details such as source, destination, next schedule, etc., and any errors that may have arisen such as attempting to transfer data to an archive that has been deleted or from an SD card that has been removed.

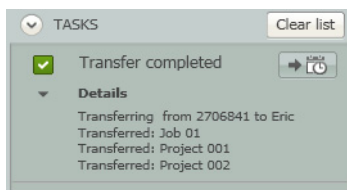
You can also edit the schedule or delete it. To ensure that your schedule task is running properly:

- The instrument must be turned on, running and have a connection to BZ-5503 via either USB or network.
- If a schedule is set up to retrieve data from an SD/CF card, then do not remove the card.
- BZ-5503 must be left running on the PC to which the data are to be transferred.
- Do not remove/disconnect the Archive in which the scheduler has been set to save data.



Drag and Drop

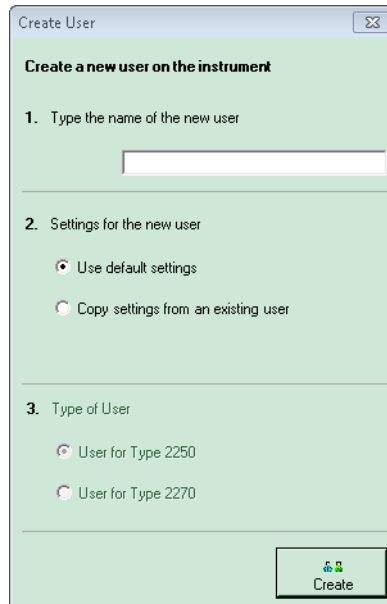
You can also transfer data by dragging it from the instrument and dropping it in an archive. If you drag and drop a job folder, a button is added in the TASK information for the transfer:



You can then click  to open the *Scheduled Data Transfer* dialog and set a schedule for future transfer of data for the job folder as described above.

Create Users on Instrument (Type 2250/2270 Only)


The *Create User* wizard is used to create a new user on the instrument:



Two sections of the wizard are used (as the software already knows the *Type of User*):

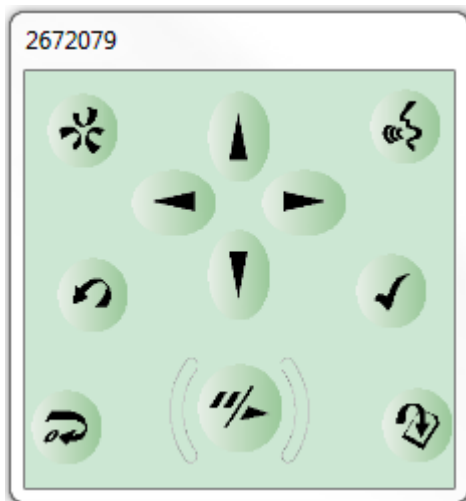
Section 1: allows you to type in the name of a new user on the instrument.

Section 2: allows you to select the method to use to create the new user. You can choose either the 'default' settings, or copy existing settings from another user by selecting the user from the drop-down list. Once you have selected what you want, click **Create**.

The *Create User* wizard can be displayed by right clicking on an instrument in the tree view and selecting **Create User** from the drop-down menu, or by clicking an instrument and then clicking  on the toolbar.

On-line Display

The on-line display and keyboard connect to the instrument you have selected in explorer. They allow you to control and monitor your measurements remotely from your PC.



Note:

The on-line display can be active while transferring data to the archive or to the instrument. More than one on-line display can be active at the same time, this means that different instruments can have their own on-line display.

Archive

[Archives Node](#)

[Transfer Data from the Archive to the Instrument](#)

[Create Users in Archives](#)

[The Export Wizard](#)

[Export Data to Excel](#)

[Export to Qualifier](#)

[Add Archive](#)

[Removable Disks, SD-, SDHC- and CF-cards](#)

[Data Viewer](#)

[Profile View](#)

[Table View](#)

[Spectrum View](#)

[Statistics View](#)

[Tone Table View](#)

[Marker Table View](#)

[Annotations and Attachments](#)

[Search](#)

[Add/Edit Note](#)

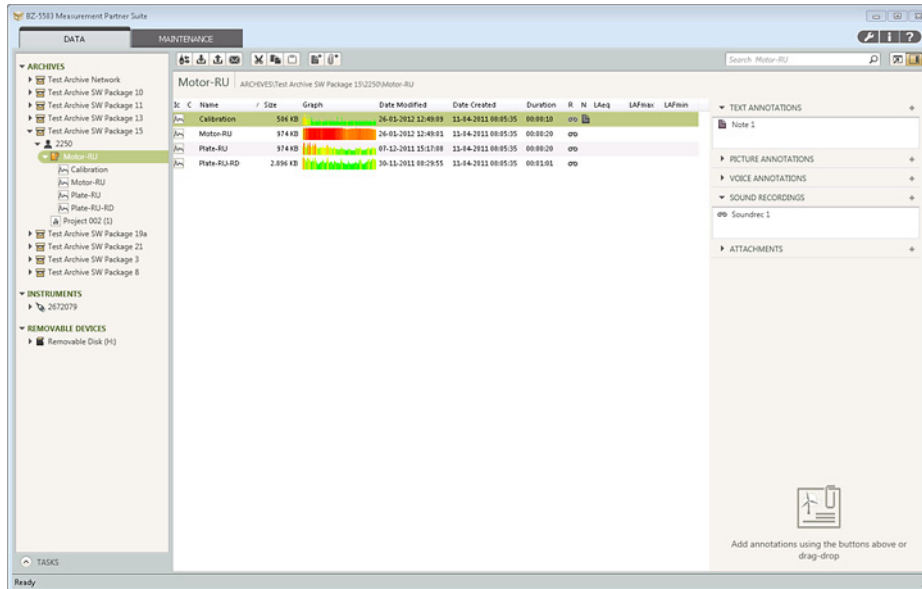
[Calculations](#)

[Master Files](#)

Archives Node

The ARCHIVES Node allows you to view or select jobs/projects in the archive for further action, and to connect, disconnect or hide archives from the tree view. It consists of an archive tree and a list view

An example Archive Tree and List View (for the DATA tab) are shown below:



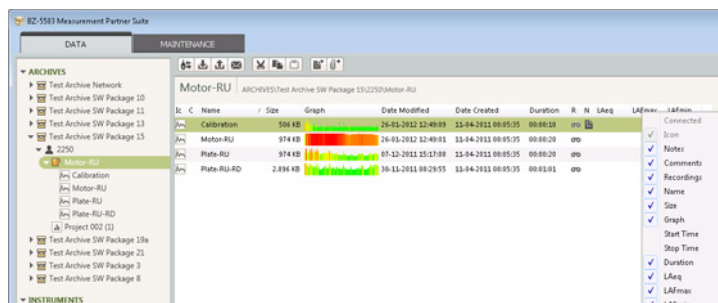
Archive Tree View

The archive tree view allows you to quickly navigate to the job folder and project you need in the archive.

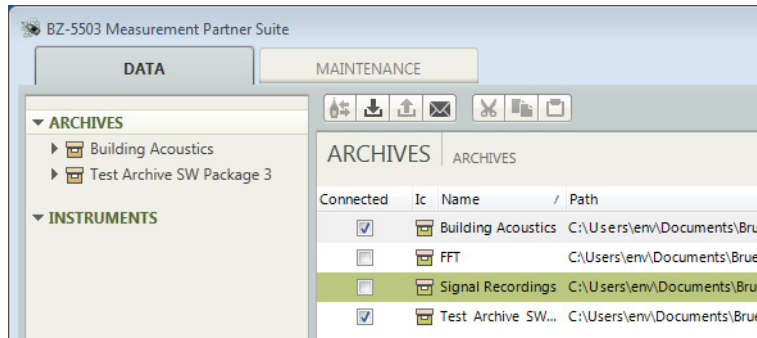
List View

The list view (to the right of the tree view) allows you to sort the data.

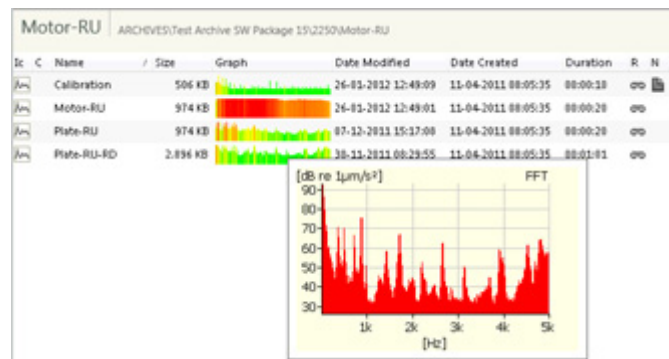
The list view contains job folders and projects with a number of details listed in the columns. Right-click on the column-header to display the columns that are available. Select/deselect from the list that pops up:



- You can re-organise the columns by clicking a column header and dragging it to another position
- You can sort the list in accordance with any of the columns by clicking on the column header. Click again to reverse the sorting
- You can hide archives from the tree view by unchecking the *Connected* checkbox on the left of list view



- The *Graph* column shows your measurements as thumbnails. Neither Sound Level Meter data nor Logging data from software versions below 2.0 contain graphics content
- For Logging data the thumbnail shows the Logging Overview measured by the instrument
- For Frequency Analysis data the thumbnail shows the L_{eq} spectrum
- The thumbnail is green for data below 30 dB, and red for data above 100 dB – and then from green through yellow to red from 30 to 100 dB
- Hover the mouse over the thumbnail to show it as a small graph like this:



- Hover the mouse pointer over the Note icon to display the content
- Hover the mouse pointer over a Comment or Recording, for immediate playback – it stops when you move the mouse pointer again

Context Menus

To help you manage your data in this view, various context menus have been provided. These pop-up when you right-click on the selected item. For instance, menus have been provided for each of the tree nodes, each of your job folders and each of your projects. The various menu options may or may not be available, depending on which part of the tree you are in. Most tasks and functionality in the Archive View can be activated from the context menus.

While some of the options on these context menus are specific to this BZ-5503 software and need explanation (see below), some are common options found in most software packages, such as **Expand**, **Collapse**, **Explore**, **Cut**, **Copy**, **Paste**, and **Rename**, which are self-explanatory.

Context Menus Specific to BZ-5503 Software

Add Archive: Use this option to add a new archive or connect to an existing one. Type the new name into the entry field of the *Add Archive* window that pops up, then select where to create the new archive by navigating to it using the browse button. Click **OK** to accept or **Cancel** to abort.

Create User: Use this option to create a new user in the currently selected archive. Type the new name into the entry field and then select which settings you want to use for the new archive. Use either the default settings or

copy the settings from an existing user in the archive, selecting the user from the drop-down list that appears when you select the radio button. When you have finished, click **Create** to create the new user.

Properties: Use this option if you want to check the path of the currently selected archive.

Create Job Folder: Use this option to create a new job folder for the current user in the currently selected archive. Type the new name into the entry field of the window that pops up, and click **Create** to add your new folder to the archive.

To Instrument: Use this option to transfer selected data to the instrument. First select the instrument from the drop-down list. Then select the memory device in the instrument to which you want to download the data and click **Start Transfer**.

Add Note: Use this option to add a text note to either the job folder or a project within the folder.

Add Attachment: Use this option to add an attachment to either the job folder or a project within the folder.

Export: Use this option to export the selected jobs or projects.

View in External Window: Use this option to view the measurement data stored in the currently selected project, using an external BZ-5503 Data Viewer.


Disconnect Archive: Use this option to hide an archive from the Archive Explorer. Once hidden, the archive will no longer be displayed. To show the archive again, click the ARCHIVES node and check the checkbox for the archive.

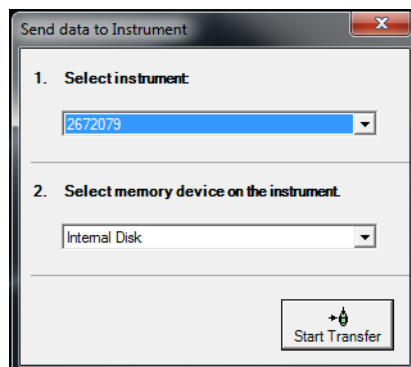
Delete: For a data project, this means that the project will be deleted from the archive on your disk. This cannot be undone, so use it with caution. For an archive, it can mean two things: either the archive will be removed from BZ-5503 and can be added again later, or that the archive is removed and deleted from disk, in which case you will not be able to retrieve it.

Hide: Use this option to hide a removable disk that is not relevant to your instrument.

Show: Use this option to display a removable disk that was previously hidden.

Transfer Data from the Archive to the Instrument

Select the data to transfer, right-click on it and select **To Instrument** (or click  on the toolbar) to transfer projects and/or settings, from a selected archive to the selected instrument, using the *Send Data to Instrument* dialog:



The transferred data is stored in the instrument on the selected memory device in the same job folder structure as in the archive and under the same user.

The panel is split into 2 sections:

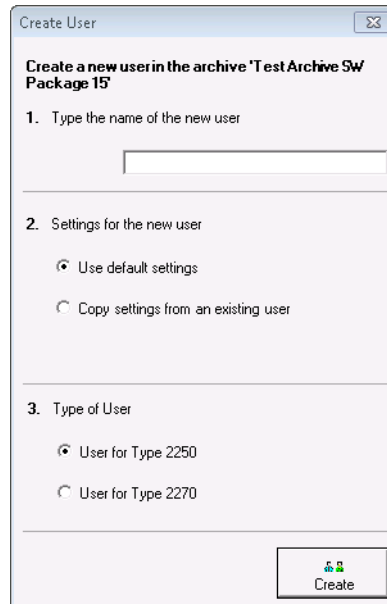
Section 1: allows you to choose an instrument for storing your data.

Section 2: allows you to select the memory device on the instrument (Internal disk, SD-card or CF-card).

Once you have selected what you want, click **Start Transfer**.

Create Users in Archives

The Create User wizard is used to create a new user in the archives:




The panel is split into three sections:

Section 1: allows you to type in the name of a new user to be created in archives.

Section 2: allows you to select which method you want to use to create the new user. You can choose either the 'default' user, or clone an existing one by selecting it from the user drop-down list. Once you have selected what you want, click the *Create* button.

Section 3: if you select *Use default settings* in step 2, this section allows you to select which type of user you would like to create, Type 2250 or Type 2270.

The *Create User* wizard can be displayed by right clicking on an archive node in the tree view and selecting **Create User** from the drop-down menu (or clicking  on the toolbar).

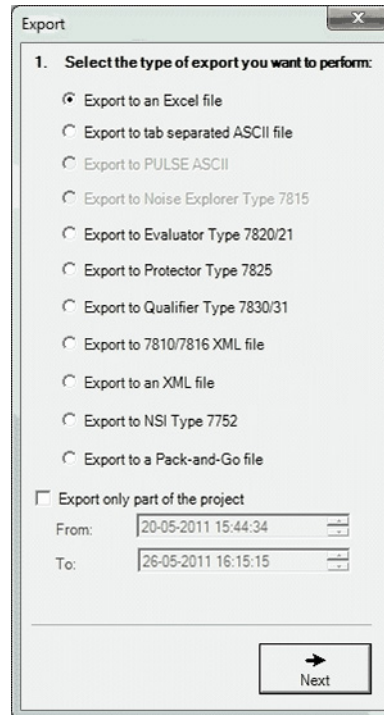
Note:

If your instrument hasn't been upgraded to the latest version of the software, then you should 'clone' an existing user instead of using the 'default' user. The default user might contain setups incompatible with older versions of the software.

The Export Wizard

Select the data to export, right-click on it and select **Export** (or click  on the toolbar) to export selected data from your instrument in various formats, depending on your post-processing software, using the Export wizard which consists of three screens:

Select the type of export you want to perform:



Select which type of file format you would like your data exported to. The choices are normally Excel, text or XML format, but if you are using one of Brüel & Kjær's other post-processing software packages, they will also appear in the list of radio buttons, and can be selected. (If none of these products have been installed, they will be greyed out in the list.)

Export only part of the project can be used to export data from a specific time period of a logging project to Excel, ASCII, Evaluator, Protector, 7810/7816 or XML. You can set the region by selecting a marker in the [Marker Table View](#), by clicking and dragging and selecting **Export Region** in the [Profile View](#), or by manually entering times.

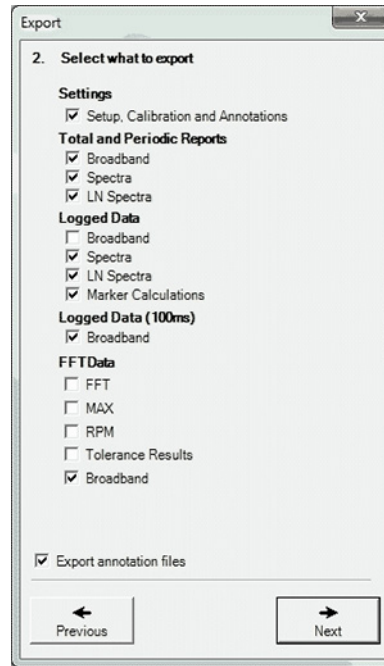
Once you have chosen which data is to be exported, click the button. The button will be a **Finish** button, if no more selections are necessary, or a **Next** button, to display wizard dialogues for further selections – like in *Export to an Excel file*.

One of the following screen appears, depending on the type of data to be exported:

Select what to export:

There are two screen possible compositions depending on the type of data: the primary and alternative. The examples below are for export to Excel.

Primary



Settings

Setup and Calibration parameters will be output to one sheet.

Total and Periodic Reports

Broadband will output broadband data to a single sheet. Total data will be output to one row. Periodic Reports will be output with one Report interval per Excel row.

Spectra will output Spectral data to a single sheet. Total data will be output to one row. Periodic Reports will be output with one Report interval per Excel row.

LN Spectra will be output to a single sheet. Total spectra will be output to one row. Periodic Reports will be output with one Report interval per Excel row.

Logged Data

Broadband will output Broadband data to a single sheet. The Logged data will be output with one logging interval per Excel row.

Spectra will output Spectral data to a single sheet. The Logged data will be output with one logging interval per Excel row.

LN Spectra will be output to a single sheet. The LN spectra will be output with one logging interval per Excel row.

Logged Data (100 ms)

Broadband will output LAeq and/or LAF to a single sheet. The data will be output with one 100 ms interval per Excel row.

FFT Data

FFT will output the FFT spectrum to a single sheet.

MAX will output the MAX FFT spectrum to a single sheet.

RPM will be output the RPM to a single sheet.

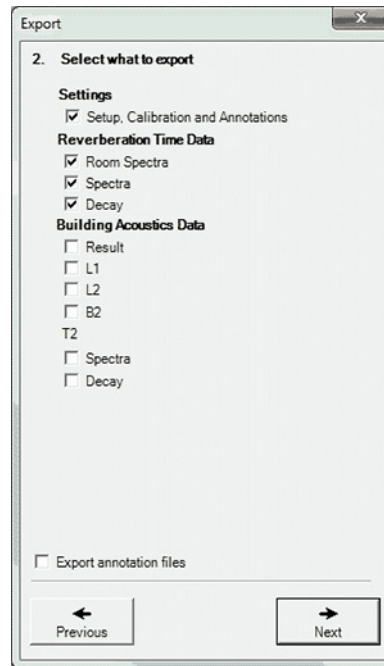
Tolerance Results will output tolerance results and the FFT spectrum at the time of Max Delta Sum to a single sheet.

Broadband will output broadband and weather data to a single sheet.

Export annotations files

If **Export annotations files** is checked, BZ-5503 will copy all annotations made on the data to the "project-name" Annotation folder.

Alternative



Settings

Setup and Calibration parameters will be output to one sheet.

Reverberation Time Data

Room Spectra will output Room Reverberation Time Spectra (T30 Room, T20 Room and EDT Room) to a single sheet.

Spectra will output Reverberation Time Spectra (T30, T20 and EDT) for each position to a single sheet.

Decay will output the decays for each position to a single sheet.

Building Acoustics Data

Result will output the result spectrum together with L1 average, L2 average, B2 average, T20 and T30 to a single sheet

L1 will output L1 spectra for each position to a single sheet.

L2 will output L2 spectra for each position to a single sheet.

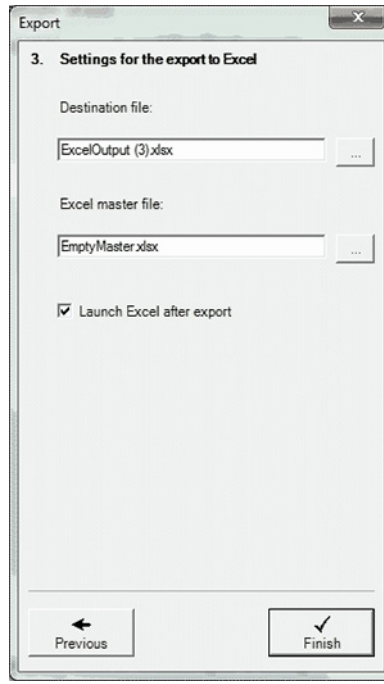
B2 will output B2 spectra for each position to a single sheet.

T2 Spectra will output T20 and T30 spectra for each position to a single sheet.

T2 Decay will output reverberation decays for each position to a single sheet.

Each selection will output data to a separate sheet. Select the data you want to export and the final screen appears:

Settings for Export to Excel



You can:

- Save the output in an Excel file (either by typing the name into the entry field or browsing to it using the browse button)
- Select an Excel Master File (either by typing the name into the entry field or browsing to it using the browse button)

Note:

The parameters in the header row will be in the language selected in [Options_ Language](#)

- Launch Excel after export

Export Data to Excel

You can:

- View all data for each Sound Level Meter or Frequency Analysis Project in one row
- View all data for each logging interval in Logging Projects in one row
- View all data for each Report interval in Periodic Reports in one row
- View Reverberation Time data or decays
- Export as much data as you want in one go – within the scope of a single User's data and the limitations of Excel
- Make your own filter to extract data for export
- Make your own Excel report format including charts and tables

Note:

Data can only be exported from the archive. Transfer the instrument data to an archive on the PC using the Measurement Partner Suite BZ-5503.

To Export a Specific Data Set from the Data Viewer


1. Right-click a data set from the [Data Viewer](#) and select:
 - **Copy Data** in a graph
 - **Copy** or **Copy entire table** in a table

Note:

In the [Marker Table View](#), copy acts on all markers of the same type, while copy entire table copies all markers.

2. **Paste** the data into Excel.

To Export All or a User-selected Combination of Data Sets (Using the [Export Wizard](#))

1. Right-click the selected data in the ARCHIVES tree and select **Export** from the drop-down (or click  on the toolbar).

Using the [Export wizard](#), you can select which data you want to export, and with an [Excel Master File](#), you can format the exported file.

You can choose to launch Microsoft® Excel immediately or save the output to your chosen Excel file.

Master Files

Two default Master Files are supplied with BZ-5503:

- EmptyMaster.xls (compatible with Microsoft® Excel 2003 and earlier)
- EmptyMaster.xlsx (compatible with Microsoft® Excel 2007 and 2010)

These files are used to export the complete data sets from your instrument and should not be modified.

Four Master files (referred to as such only in the wizard) are supplied with the BZ-5503 software:

- EmptyMaster.xls
- EmptyMaster.xlsx
- FilterExample.xls
- ReportExample.xls

Export to Qualifier

Select *Export to Qualifier Type 7830/31* in the Export Wizard to export data for calculating Building Acoustics parameters in accordance with international and national standards. You can either export Building Acoustics data measured with 2250/2270 Building Acoustics Software directly, or you can export Frequency Analyzer and Reverberation Time data using a special data selection dialog described here.

Data from Building Acoustics Software

If you have used the Building Acoustics Software BZ-7228, or the Dual-channel Building Acoustics Software BZ-7229 for measuring source and receiver room levels, the background noise and the reverberation time, then all data are kept in a single project. You then just need to select the project for export.

Data from Frequency Analyzer and Reverberation Time Software

- Use BZ-7223 Frequency Analyzer Software to perform L1, L2 and B2 measurements.

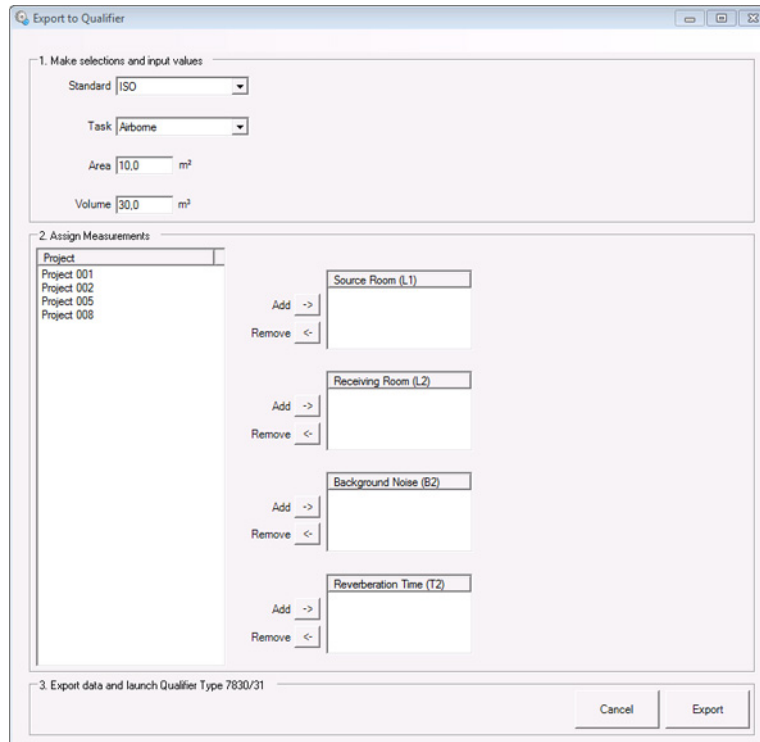
Note:

Version 2 of this software can control the built-in generator.

- Use BZ-7227 Reverberation Time Software to perform T2 measurements.
- Use BZ-5503 to archive the data on your PC.
- Use this dialog to select which data to export to Type 7830 as L1, L2, B2 and T2 data, and to select standard, task, surface and volume - see typical dialog below.
- Use Type 7830 version 2.9 (or higher) to calculate and report the relevant building acoustics parameters.

Hint:

To help you with 'data housekeeping' when doing the measurements, please create a job folder on your Type 2250 for each building acoustics task you want to perform. Set the 'Project Name Prefix' under 'Storage Settings, Preferences' to L1, L2, B2 or T2, matching the current function you want to measure - then Type 2250 will automatically do the position numbering.



1. Select the desired *Standard* and *Task* from the drop-down lists – a detailed description of the standards and tasks is available in the Qualifier Online Manual, Chapter 6. A number of extra values for the calculation can be set, depending on the *Standard* and *Task* chosen:

- For all standards with *Airborne* and *Façade* tasks, you can set the *Area* of the partition.
- For all standards with *Airborne*, *Façade* and *Impact* tasks, you can set the *Volume* of the room.
- For *NEN* standard with *Façade* task, you can set *Cr* and *Traffic Type*.
- For *NEN* standard with *Impact* task you can set *Rubber Hammer* and *Floor*.
- For *ASTM* standard with *Façade* task you can set *OILR Corr.* and *OITL Corr.*

2. Select the data to be exported. In the Project list you can select data from Frequency Analysis and Reverberation Time projects – all located in the folder you selected when starting the Export wizard.

3. Select the files and press the relevant *Add* or *Remove* buttons to add them to (or remove them from) the *Sending Room (L1)*, *Receiving Room (L2)*, *Background Noise (B2)* or *Reverberation Time (T2)* lists to the right of the Project list.

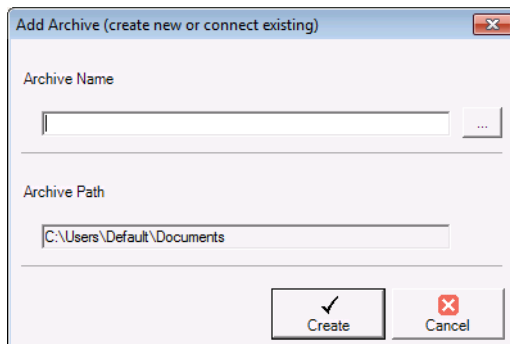
Note:

NEN and BREW standards require measurements from two source locations – the lists appear when selecting these standards.


4. When you have selected and organized the data correctly in the lists, click the Εξπորτ button to start the export to Qualifier.

Add Archive


Right-click on the ARCHIVES node and select **Add Archive** from the pop-up menu (or click  in the toolbar) to create a new archive or connect an existing one, using the *Add Archive* dialog:



Create a New Archive

1. Enter the *Archive Name*.
2. Use the browse button  to select the *Archive Path*.
3. Click **Create** to insert the new archive (or **Cancel** to abort).

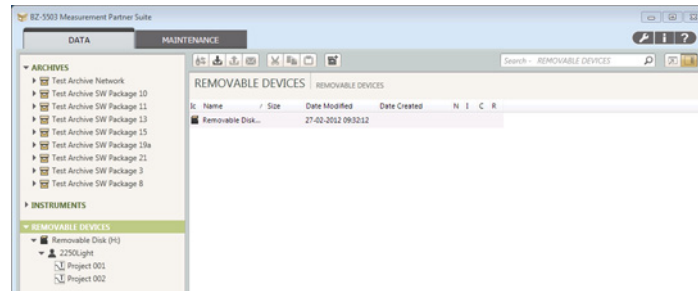
Connect an Existing Archive

1. Use the browse button  to find the archive.
When the archive has been selected, its name will automatically be entered in the *Archive Name* field.
2. Click **Create** to insert the archive (or **Cancel** to abort).

Removable Disks, SD-, SDHC- and CF-cards

In the Archive tree you can get access to removable disks (memory cards) like SD-Cards, SDHC-Cards or CF-Cards (this requires that your PC has slots for these cards - or you connect an SD-Card, SDHC-Card or a CF-Card reader to the USB port of the PC).

If you have stored instrument data on a memory card, and the card is in the SD/CF slot on your instrument, then you can transfer the data from the card to an archive using the [To Archive](#) task (through the USB connection), or you can remove the card from the instrument and insert it in the slot or card reader on your PC. The card will then be available in the [Archive View](#) as a 'Removable Device':



For a quick overview you can view some of the stored data directly on the removable before transferring it to an archive. On transfer, all the data are available.

You can copy or move data (projects, jobs or even users) to an archive. Right click on the data you want to copy (select **Copy** from the context menu) or move (select **Cut** from the context menu) and then right-click at the position in the archive, where you want the data and select **Paste**. The data will then be transferred from the card to the archive.

You can also drag and drop the data from card to archive. Click and drag the data you want to transfer to its new position in the archive. When you release the mouse button, the data will be copied.

You can move or copy data from an archive to the card. If you press **<Ctrl>** while you release the mouse button, then the data will be copied.

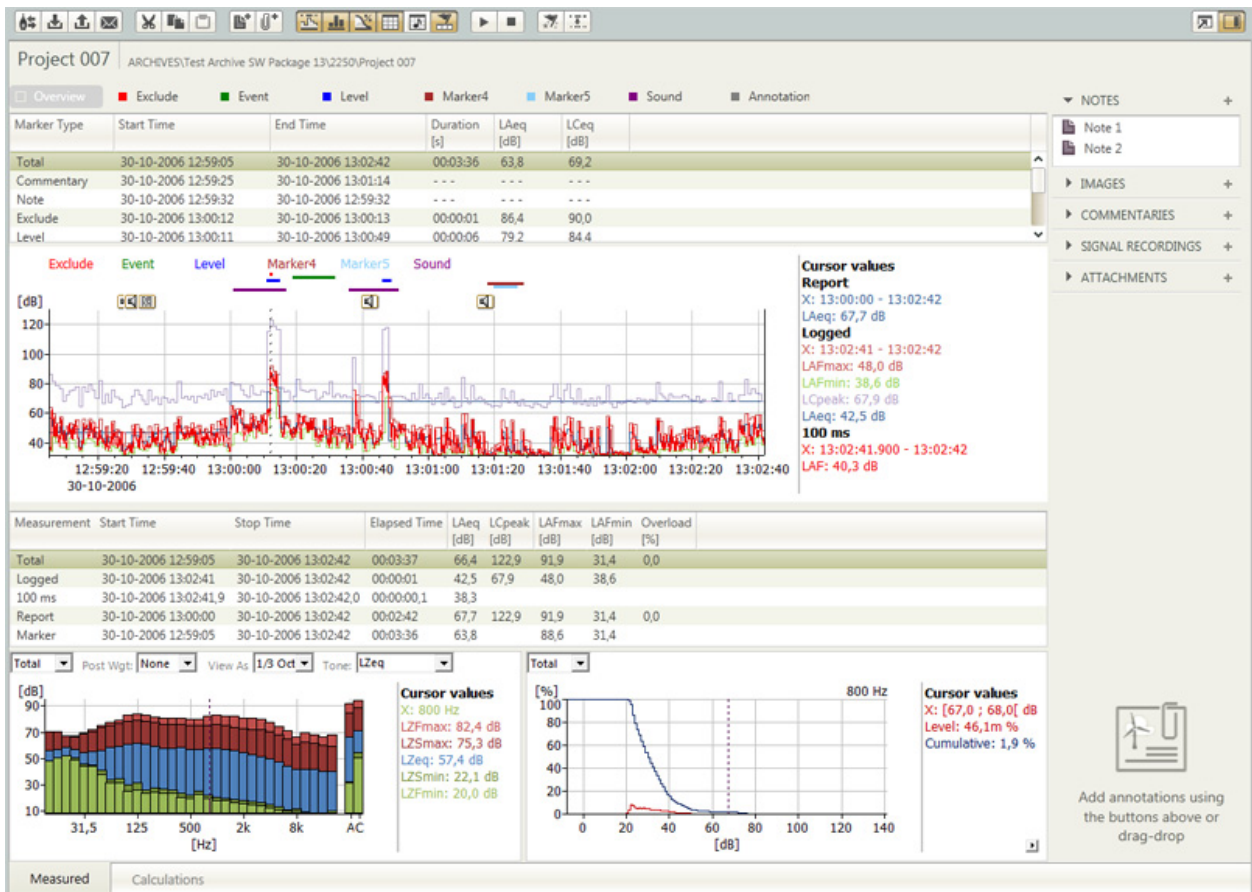
Note:

All removable disks on your PC will be displayed in the Archive View. If a disk is not relevant as storage media for the instrument, then you can hide it by right clicking on it and selecting **Hide** from the context menu.

You can reveal hidden removable disks by right clicking at the top most level in the Archive View and selecting **Show**.

Data Viewer

The BZ-5503 Data Viewer's Measured tab allows you to view the data in your previously saved projects. Depending on the license available, you can also post-process data. Click on any project in your archives to open a data viewer similar to that shown below.



This button shows the data in an external viewer with reduced toolbar



and reduced functionality (for example, you cannot add attachments and annotations using the side bar). In this way you can view more than one project at a time.

The Data Viewer displays the data in up to six different views: [Profile View](#), [Table View](#), [Spectrum View](#), [Statistics View](#), [Tone Table View](#), and [Marker Table View](#):

- Sound Level Meter projects can be viewed using the Table and Statistics views
- Frequency Analysis projects can be viewed using the Table, Spectrum and Statistics views
- Logging and Enhanced Logging projects can be viewed using five views: Profile; Table; Spectrum, Statistics and Marker Table views
- Reverberation Time projects can be viewed using the Table and [Reverberation Time Spectrum](#) views
- FFT projects can be viewed using the Table and [FFT Spectrum](#) Views

In addition to the above, and if the license is available, you can use Tone Table for tone analysis of projects including spectra.



Views can be enabled/disabled using the view selectors in the view toolbar:

The first time you open large logging and enhanced logging projects (and projects including logged full statistics) the system needs to build compressed versions of the data for easy zoom and overview facilities in the profile, and it also needs to build profiles of LN values. The compressed information is stored within the project in the archive for faster access on successive openings.

Note:

If the archive is write protected, then this compression is not possible and the zoom facilities will be limited.

Note:

In the various table views, - - - means that the value cannot be calculated (for example with 100 ms marker resolution) or is covered by an Exclude marker.

Copy Graphics and Data

You can copy the displayed graphs to the clipboard by right clicking inside a graph and selecting **Copy Graph**. You can then paste the graphics into your documentation tool, for example, Microsoft® Word.

You can copy the displayed data to the clipboard by right clicking inside the graph and selecting **Copy Data**. You can then paste the data into your documentation tool, for example, Microsoft® Excel.

Adding Attachments and Annotations

Three buttons in the Data Viewer toolbar allow you to add attachments and annotations to you data at the Project level:



Add Note: Opens a simple text editor so that you can add a note to the project.



Add Annotation: Opens the Add Annotation dialog that lets you attach a file to the project: commentary, signal recording, note, image or other attachment.




Show/Hide Side Bar: Toggles the display of a sidebar providing the same features as the two buttons above




You can also add annotations and attachments to markers and points of the display in Profile view.

For details see [Annotations and Attachments](#).

Profile View

The Profile view  shows measured broad-band parameters ($L_{A_{eq}}$, L_{AFmax} , etc.) as a function of time. Parameters from Logging, 100 ms and Reports can be displayed.

Right-click inside the profile to select which parameters to display. Above the profile you may see the markers made with the instrument during the measurement or added later as colored horizontal bars. Hover the mouse pointer over the marker to see details of the marker.

A signal recording (displayed as a sound marker) can be played back by right-clicking the marker and selecting **Play** – or by placing the profile cursor to the left of or inside the marker and then pressing the Play button , or **<Ctrl + P>**, in the upper left corner. Click the Pause button , **<Ctrl + P>**, to pause playback or the Stop button , **<Ctrl + S>** to stop playback and move the profile cursor to the start of the recording.

If the data to view in the profile covers too many samples to be displayed efficiently, then the compressed version of the data is displayed. The compressed data shows the minimum and maximum values within the compression intervals, e.g., if you have several days of data sampled with 1 s resolution, then if the profile displays all the days, then each displayed sample might cover 1 minute, with the minimum and maximum value displayed for the minute. You then have to zoom in on part of the profile to see the profile of 1 s values.

Note: LN values will not be available for compressed profiles.


Adding a Marker

To add a marker, click and drag in the profile view and select **Add Marker** and the type of marker from the pop-up menu. When you add a marker, it is also added to the [Marker Table View](#).

Alternatively, you can add event markers by clicking on  to open the *Marker and Report Wizard*:

1. Click *Add Event Marker*.
2. Enter a *Trigger Level* (the Leq level that will trigger an event).
3. Enter values for *Minimum Duration*, and *Pre Trigger* and *Post Trigger* marker extensions.
4. Select the type of *Marker* to use.
5. If you want to remove existing markers of the type you have selected, select *Remove existing marker occurrences*.
6. Click **Finish** to add the markers to the Profile View and the [Marker Table View](#).

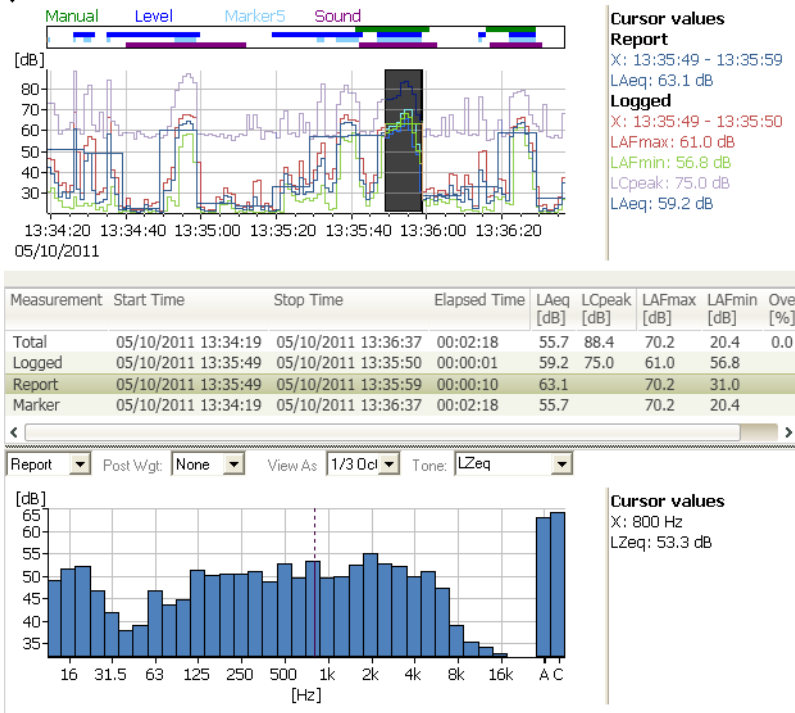
Adding a Report

You can also add reports covering time periods longer than the logging period by clicking on  to open the *Marker and Report Wizard*:

1. Click on *Add Time Reports*.
2. Select a *Report Period* or enter a value for *Use logging time* (the number of logging periods to include in each report period). Changing one of these values changes the other.
3. If you want the reports to match the current cursor position select *Synchronize reports with profile cursor*.
4. Click **Finish** to add the Report to the [Table View](#).

You can view the data in the reports in:

- the Profile View by right-clicking in the Profile View and choosing the **Report** parameters to display
- the [Spectrum View](#) and [Statistics View](#) by selecting the Report line in Table View and clicking in the Profile View



Once you have added a report *Remove Time Reports* becomes available in the wizard.

Note:

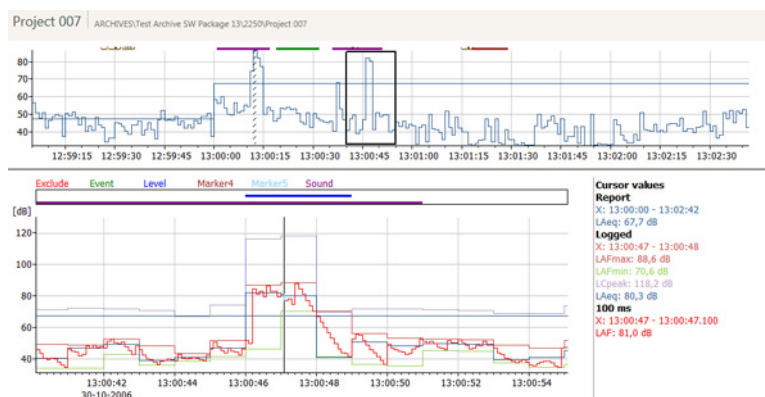
When you use *Remove Time Reports*, you removes the report. However, if the project an Enhanced Logging project, a report has already been created on the instrument. Creating an report in the application retains the original report, so when using *Remove Time Reports* you can revert to the original report that was measured with the instrument.

Export Region

To export a limited region, click and drag in the profile view and select **Export Region** from the pop-up menu to open the [Export Wizard](#).

Zooming

You can zoom in on part of the profile by clicking inside the profile and dragging the mouse pointer horizontally. When you release the mouse button, select **Zoom** from the pop-up menu:



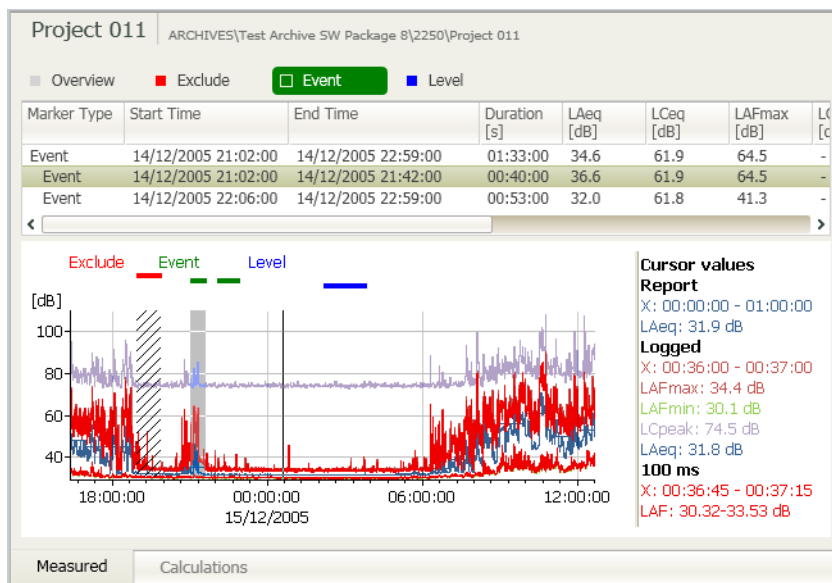
The overview of the profile is displayed above the zoomed profile – a little box on the overview profile indicates the zoomed part. Use the mouse pointer to drag the box to another part of the overview profile for a zoomed display of this part.


You can select a new zoom range either in the zoomed profile or in the overview profile - the latter can be used for zoom-out.

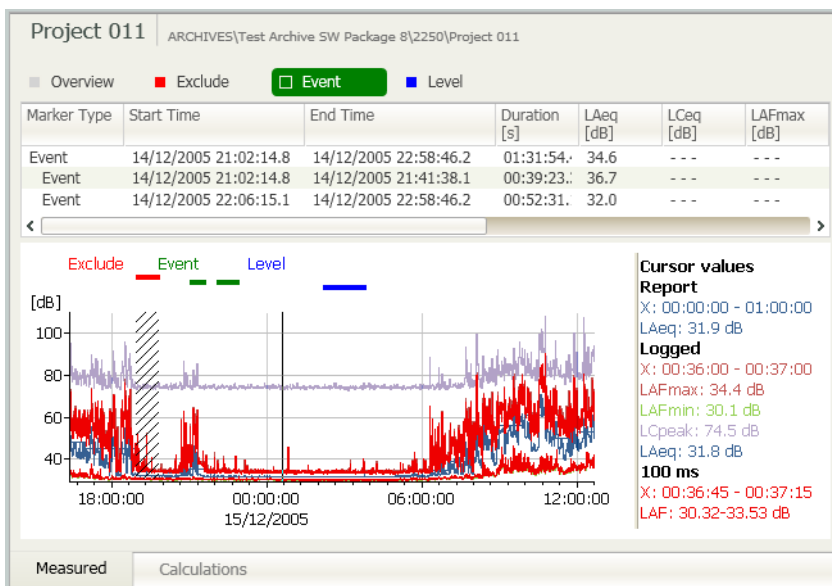
Double-click on the x-axis to unzoom or right-click in the profile and select **Unzoom**.

100 ms Resolution of Markers

As default, markers cover a multiple of the logging period.



However, if your project contains data from 100 ms logging, you can click  in the toolbar to change the resolution of the markers to 100 ms.



You can use this if you wish to view the data in greater detail, particularly if you zoom in on the profile.


Note:

With 100 ms marker resolution, the number of parameters calculated is reduced, as only parameters for fast logging are calculated.

Annotation and Attachments

You can attach files to markers and add annotations to the spectrum at sample level (at a point in the profile) by right-clicking and selecting **Add Annotation**. See [Annotations and Attachments](#).

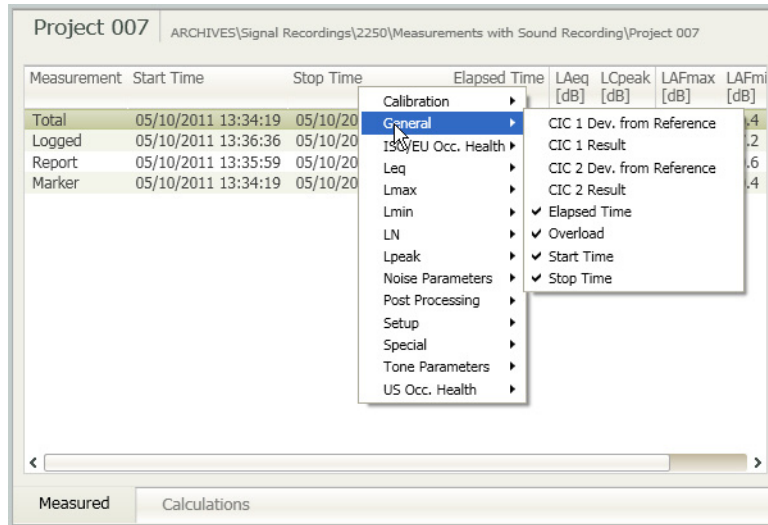
Table View

The Table view  shows measured broadband parameters in tabular form. There can be up to five rows with parameters from Total, Logged, 100 ms, Report and Marker. The Logged, 100 ms and Report rows contain parameters from the sample period selected by the Profile cursor.

The Marker row contains parameters from the marker selected in the profile.

Note:

This feature requires a Logging Module license.



Right-click on the column header to display the available columns. Select/deselect from the menu. You can reorganize the columns by clicking a column header and dragging it to another position.

One of the rows is highlighted to indicate whether data from Total, Logged, 100 ms, Report or Marker are selected for display in the Spectrum and Statistics views.

Spectrum View

Spectrum View

The Spectrum view shows the measured spectra in graphical form. Select which spectra to display using the selector in the [Table view](#) above the graph: Total, Logged or Report. This setting is linked to a similar parameter in the [Statistics view](#).

Scaling x- and y-axes

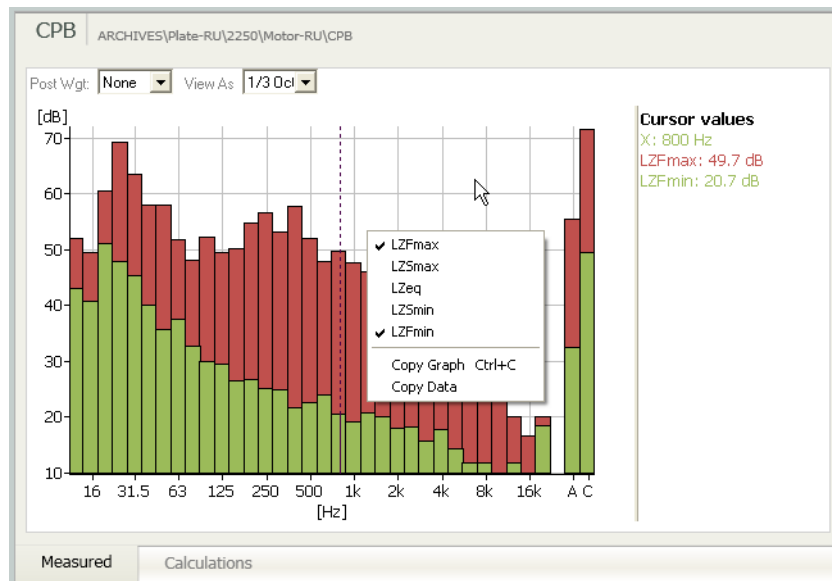
In the spectrum views, you can change the x- and y-axis ranges by double-clicking on the maximum or minimum values, typing in a new value and pressing **<Enter>**. Double-click on the axis to return to the original setting.

CPB Spectrum View

The CPB Spectrum view shows CPB spectra in graphical form.

You can add A, B or C post-weighting to the display so that both the weighted and the unweighted spectra are shown, view data as 1/1- or 1/3-octaves and, with a BZ-5503-B license, select the parameter to use for tone assessment.

Right-click inside the spectrum to select which parameters to display.



FFT Spectrum View

The FFT Spectrum view shows the FFT spectra in graphical form.

Main, Delta, Reference, Harmonic and Symmetric Delta cursors are available - together with Auto Peak functionality (as in FFT Analysis software BZ-7230). You select the cursor type in the drop-down above the graph. Clicking with the mouse on the graph sets the Main cursor, unless you point at one of the special cursors to drag it to another position or change the width.

The other drop-downs above the graph allow you to choose the scaling (PWR, RMS, PSD, ESD, Peak, Peak-Peak); the frequency weighting (A or Z); Acceleration, Velocity or Displacement (Accelerometer measurements only); and Linear or Logarithmic Y-axis (if data has been saved with Engineering units set).

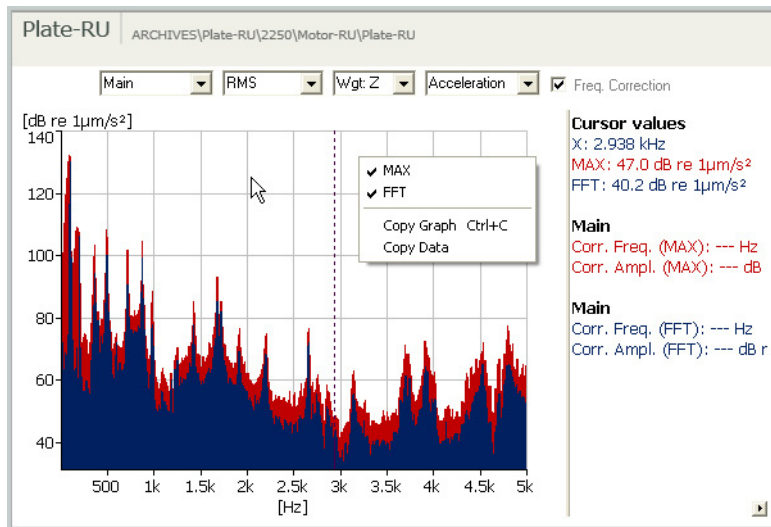
Check the Frequency Correction checkbox, if you want corrected amplitude and frequency to be calculated for peaks between FFT lines.

You can zoom in on part of the spectrum by clicking with the left mouse button inside the spectrum and dragging it while pressing **< Shift >**. When you release the left mouse button, the spectrum is zoomed.

The overview of the spectrum is displayed above the zoomed spectrum – a box on the overview spectrum indicates the zoomed part. Use the mouse pointer to drag the box to another part of the x-axis for a zoomed display of this part.

Double-click on the x- and y-axes to unzoom.

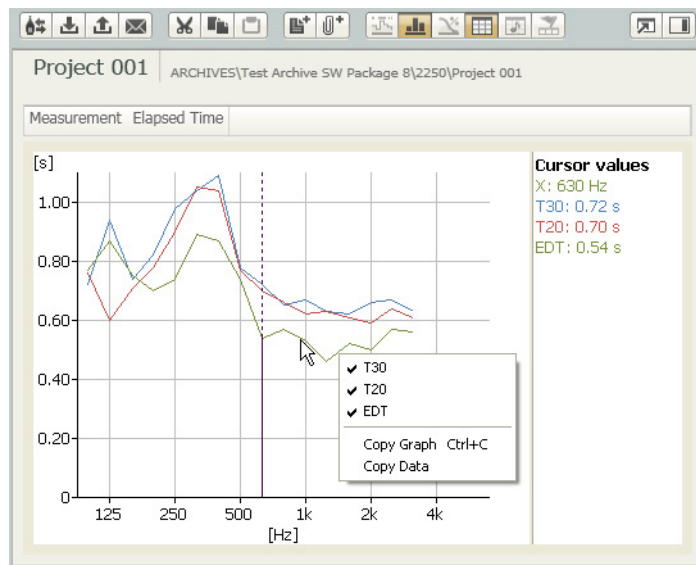
Right-click inside the spectrum to select which parameters to display.



Reverberation Time Spectrum View

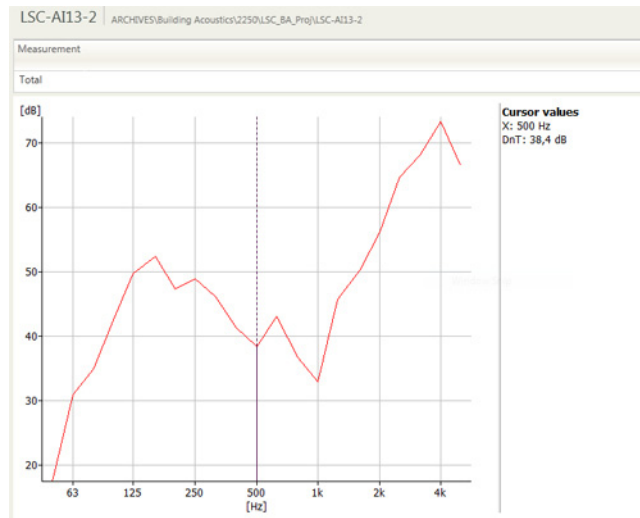
The Reverberation Time Spectrum view shows the Room reverberation time spectra in graphical form.

Right-click inside the spectrum to select which parameters to display.




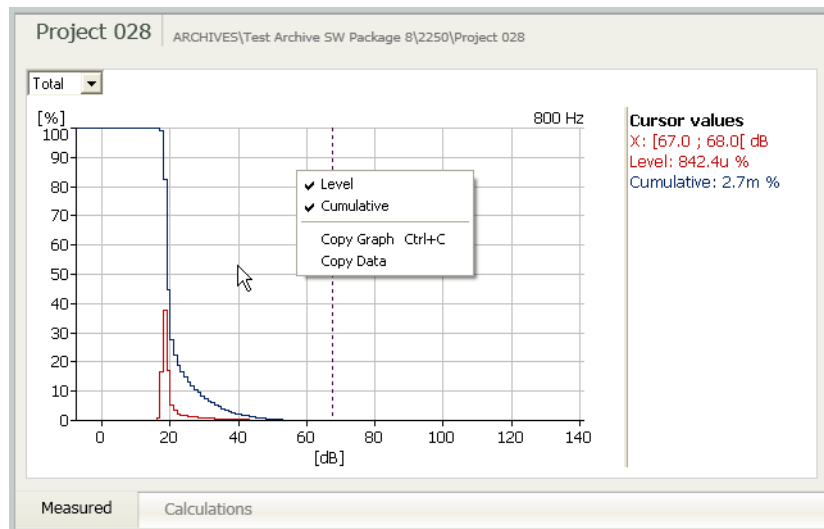
Building Acoustics Spectrum View

The Building Acoustics Spectrum view shows the Building Acoustics Result Spectrum determined by Type 2250/2270 in graphical form.



Statistics View

The Statistics view  shows the Level and Cumulative distribution of the noise levels. The statistics are based on the statistics made on the instrument.




Select which statistics to display using the selector above the graph: Total; Logged or Report. This setting is linked to a similar parameter in the Spectrum view.

The frequency of the Spectrum cursor selects the statistics from the spectral statistics (this requires that spectral statistics have been measured).

You can change the x- and y-axis ranges by double-clicking on the maximum or minimum values, typing in a new value and pressing **<Enter>**. Double-click on the axis to return to the original setting.

Tone Table View

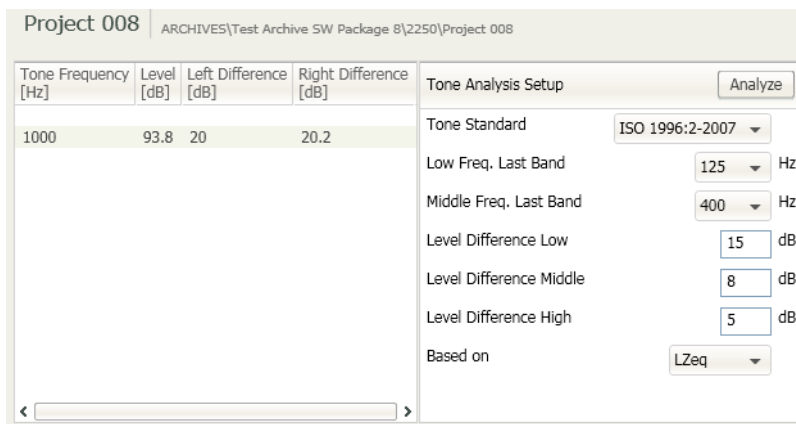
Requires license BZ-5503-B.

The Tone Table View  lists the tones found from tone assessment of FFT or 1/3-octave CPB spectra, according to the setting chosen in the *Tone Analysis Setup*.

Select the settings you need from the drop-down lists and enter or scroll to change dB values. Then click **Analyze** to make the calculations.

For CPB you can:

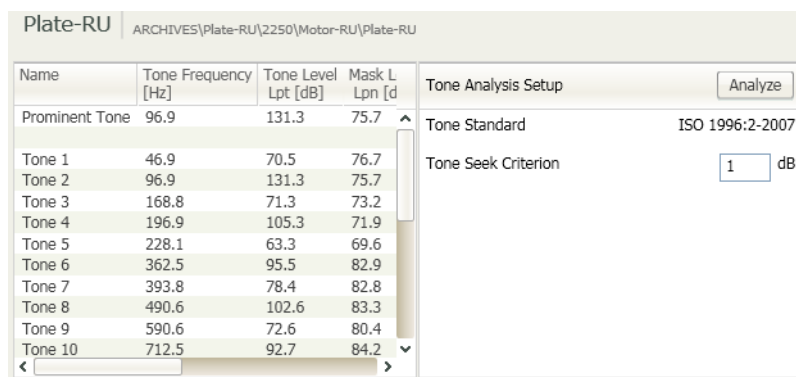
- Assess tones in a measured 1/3-octave spectrum according to ISO 1996:2007, Annex D
- Assess tones in a measured 1/3-octave spectrum according to Italian Law, “Ministero dell’ambiente, Decreto 16 marzo 1998”



Details of how the calculations are made can be found in the User Manual for Hand-held Analyzer Types 2250 and 2270 (BE1713).


For FFT you can :

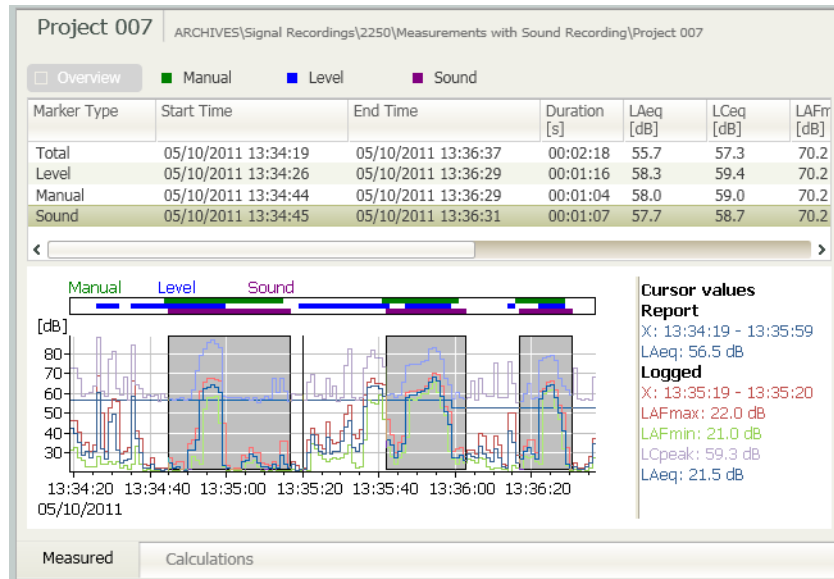
- Assess tones in a measured FFT spectrum according to ISO 1996:2007, Annex C



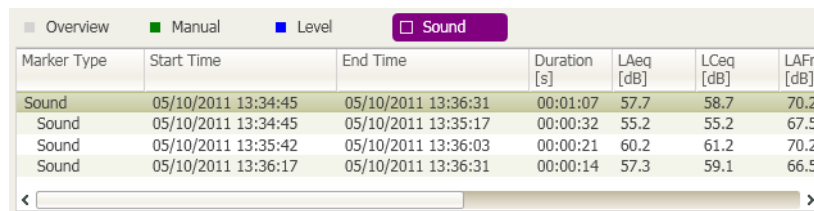
Details on how the calculations are made can be found in the User Manual for FFT Analysis Software BZ-7230 and Tone Assessment Option BZ-7231 (BE1778).

Marker Table View

Requires license BZ-5503-A. The Marker Table view  is used in conjunction with the [Profile view](#) for Logging and Advanced Logging projects. When *Overview* is selected, as in the figure below, it lists the types of markers used from the start of the first marker to the end of the last marker and the individual marker for the selected row are indicated in the Profile view. You can right-click in the header to select the columns to display.



When a single marker type is selected, for example *Sound*, the table lists all markers of that type:



Note:

- Sound markers have .wav files attached
- If you have added attachments at the sample level in the Profile view, you can display a list of them in the Marker Table view

Right-click Menus

Depending on the type of marker selected, the following menu items may be available:

- **Copy:** Copies a row of the table to the clipboard
- **Copy entire table:** Copies the entire table to the clipboard. Includes all marker types
- **Edit:** Opens the Marker Edit dialog, allowing you to change marker type, and position and to attach a file
- **Export region:** Opens the [Export Wizard](#) allowing you to export the region covered by the marker
- **Delete:** Deletes the marker (cannot be undone)
- **Play:** Plays the wave file attached to the selected marker
- **Save Recording:** Save the selected sound as a wave file
- **Join Recordings:** Saves all sounds as wave files, combining adjacent markers (i.e., markers with no time interval between them) into a single file.

See also [Annotations and Attachments](#).

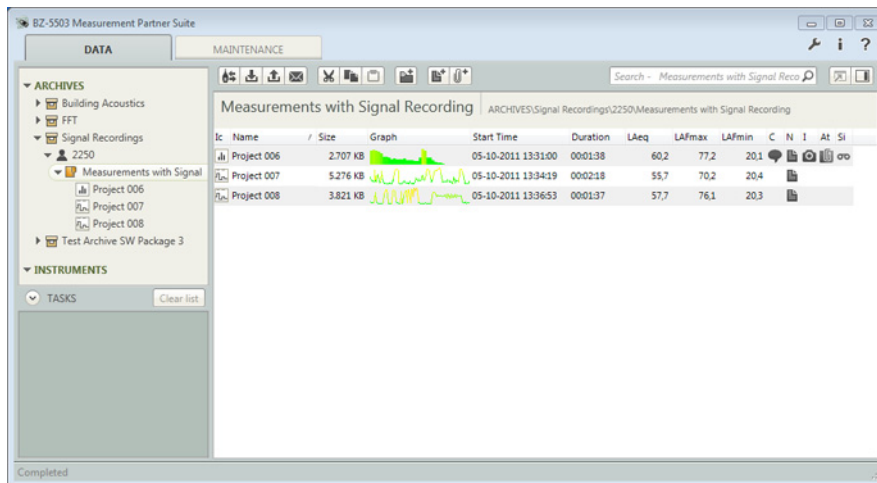
Annotations and Attachments

When you transfer data from your instrument to BZ-5503, any notes, recordings, images, etc., associated with the data are also transferred. BZ-5503 also allows you to add annotations and attachments to data in the Archives:

- [At the project level](#)
- [At marker level](#)
- [At sample level](#)

Project Annotations and Attachments

Annotations and attachments at the project level can be seen in the Data View, in columns like the C (Commentary), N (Note), S (Signal Recording) columns shown below.



Three buttons in the Data Viewer toolbar allow you to add attachments and annotations to your data at the Project level:



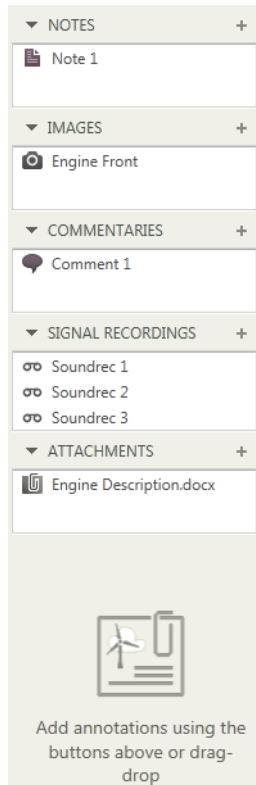
Add Note: Opens a simple text editor so that you can add a Note to the project. Also available by right-clicking a job folder or project in the ARCHIVES node.





Add Annotation: Opens the Add Annotation dialog that lets you attach a file to the project: Commentary, Signal Recording, Note, Image or Attachment. Also available by right-clicking a job folder or project in the ARCHIVES node.



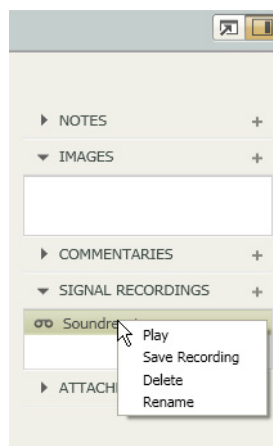
Show/Hide Side Bar: Toggles the display of a sidebar providing the same features as the Add Annotation above.



When using the sidebar, you can click one of the  buttons and browse to the file you want to attach. Alternatively, you can drag a file from Windows® Explorer and drop it on the side bar. Files are placed according to file type:

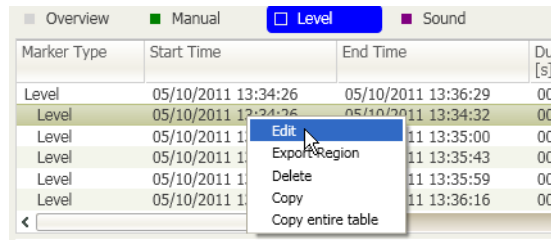
- NOTES: .txt files
- IMAGES: .jpg files
- COMMENTARIES: .wav files
- SIGNAL RECORDINGS: None. To add .wav files as recordings you can only use the  button
- ATTACHMENTS: All other file types

The sidebar also has right-click menus that allow you to edit notes, play signal recordings and commentaries, open images, as well as cut, copy, paste, rename and delete:



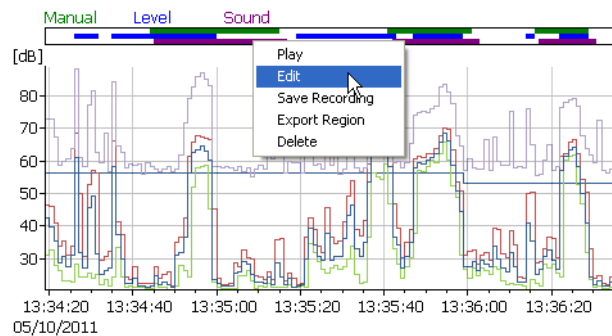
Marker Attachments

Attachments can be made at the marker level by right-clicking on a marker in the [marker table](#) or [profile](#) view and selecting **Edit**.



Marker Type	Start Time	End Time	Du [s]
Level	05/10/2011 13:34:26	05/10/2011 13:36:29	00
Level	05/10/2011 13:34:26	05/10/2011 13:34:32	00
Level	05/10/2011 13:34:43	05/10/2011 13:35:00	00
Level	05/10/2011 13:35:00	05/10/2011 13:35:43	00
Level	05/10/2011 13:35:43	05/10/2011 13:35:59	00
Level	05/10/2011 13:35:59	05/10/2011 13:36:16	00

OR

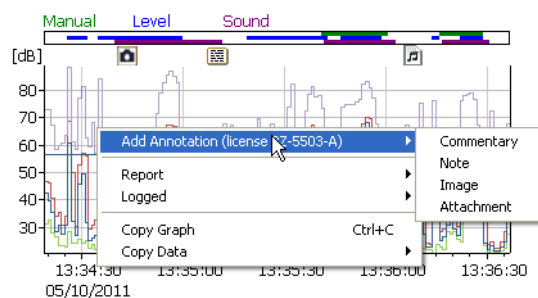


Either of these options opens the *Marker Edit* dialog, where you can browse for the file to attach, or open a file that is already attached. You can also change the marker type and start/end time for the marker.

If you wish to add a new marker, see [Adding a Marker](#).

Sample Annotations and Attachments

You can add annotations or attachments at the sample level by right-clicking anywhere in the profile and selecting **Add Annotation**. Small icons indicate the type of annotation:



Note:

The annotation is inserted at the point where you right-click (not at the position of the x-axis cursor).

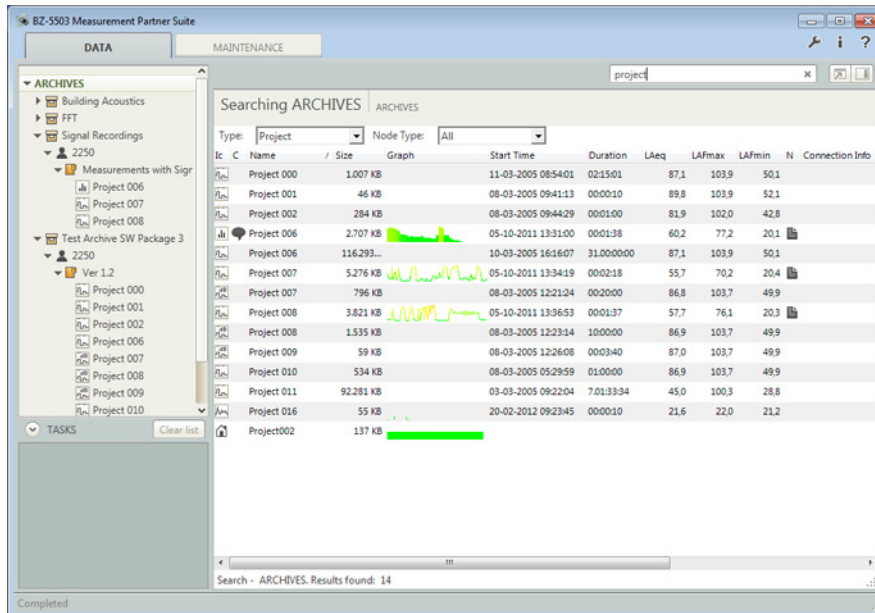
On mouse rollover, images and notes are shown in a pop-up window, while sounds are played.

Search

When you right-click on a job folder, a user, an Archive or the ARCHIVES node, *Search* becomes available.



A search starts from this point and searches through all sub-folders. The results are shown in the Search View: In the text field (the one with the magnifying glass), enter the text you want to search for and press **<Enter>**. The search will check through all the names of items and the contents of notes.





You can then filter your search with the *Type* selector. The following types of items can be found: Projects; Job Folders; Annotations; Users and Archives

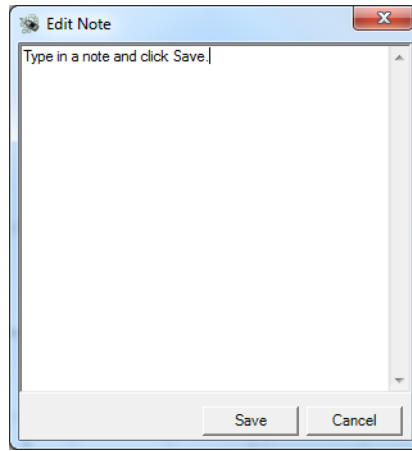
For Projects you can refine your filter using *Node Type* to select the kind of project (for example Frequency Analyzer, Logging, etc.), and for Annotations you can refine your filter using *Node Type* to select which kind of annotation (Note, Signal Recording, etc.).

The following context menus are available:


- **View in External Window**: Use this option to view the measurement data stored in the currently highlighted project, using the BZ-5503 data viewer.
- **Edit**: Use this option to edit a text note.
- **Locate**: Use this option locate the selected item in the ARCHIVES node. The item is outlined in the Tree View.

Add/Edit Note

To add a new note, right-click on a job folder or a project in the Archive Node and select **Add Note** from the list of options, click  in the Data View toolbar or  in the Data View sidebar. Type your notes into the *Edit Note* dialog, see example below, and click **Save**:



When you click on a job folder in the tree view, all notes attached to each project in the job folder appear as paperclip symbols in the list view. Similarly, when you click on an individual project in the tree view, all notes attached to that project (if there are any) are visible in the list view.

If you need to edit the note later, select the project in the list view and click  to show the sidebar, locate the note, and select **Edit** from the list of options and edit as required.

Add GPS Note

You can manually key in a measurement position in a GPS note.

A GPS note starts with "Position:", and includes the latitude and longitude. For manual entries, please enter the latitude and longitude in one of the following formats :

Degrees: *DD.dddddY DD.dddddX*

Example: 55.816730N 12.532855E

Degrees Minutes: *DD MM.mmmmY DD MM.mmmmX*

Example: 55 49.0038N 12 31.9713E

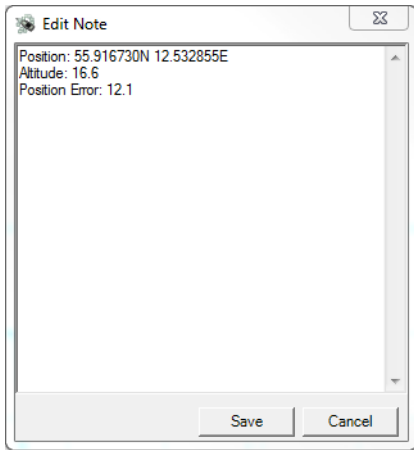
Degrees Minutes Seconds: *DD MM SS.sssY DD MM SS.sssX*

Example: 55 49 0.288N 12 31 58.278E

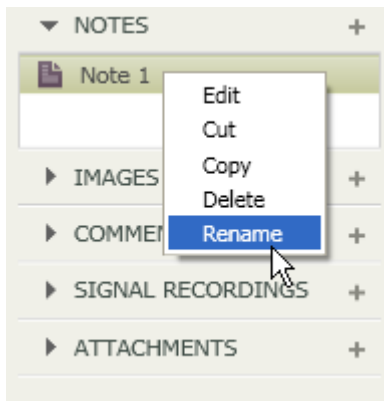
where X = E or W and Y = N or S. If you use degrees only, then you can use +/- instead of N/S and E/W (example: 43.08011N,79.071007W = 43.08011,- 79.071007). You can use "," instead of "space" between latitude and longitude

The GPS note can be used to locate the measurement on Google Maps™.

1. Create a Note, for example:




2. Click **Save**.
3. Rename the Note to, for example, GPS Note 1 (the GPS is required):




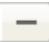
4. Right-click on the Note and select **Show in Google Maps**, which has now been added to the menu, or open the Note for editing and click the new button, **Map**.

Calculations

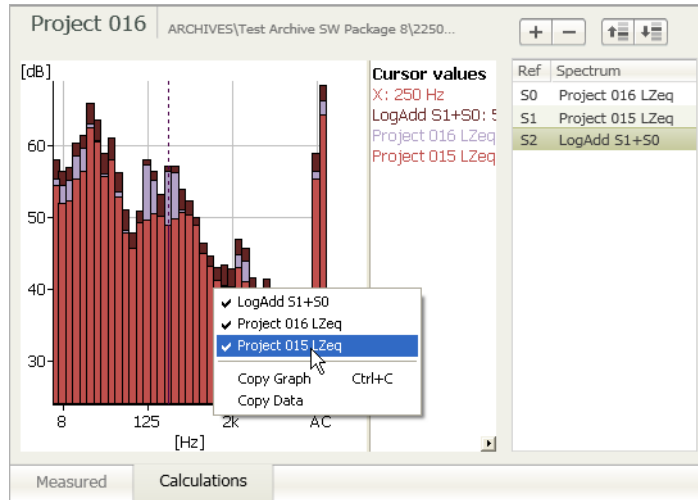
When you select the Calculations tab of the Data Viewer,  toggles the calculations sidebar on and off. You can use this for



- logarithmic addition
- logarithmic subtraction

of spectra that have the same axes such as 1/1- or 1/3-octave, for example, for subtraction of background noise.

1. Select a project in archives to show it in the Data Viewer and select the Calculations tab.
2. Make sure that the calculations sidebar is open.
3. Click and drag other projects to the sidebar – the data must have the same frequency axis to be used.
4. Click on a project in the sidebar, then press **<Shift>** or **<Ctrl>** and click on the project(s) you want to add to or subtract from the first.
5. Click  to add the spectra or  to subtract them.

The result is listed in the sidebar and displayed along with the original spectra. You can show the result on its own by right-clicking in the graph and deselecting the original spectra:



You can use  and  to rearrange the order of the projects listed in the sidebar.

Results of the calculations are saved in the first project that was shown in the Calculations tab.

Maintenance

[Installing Software Modules on the Instrument](#)

[Installing Software Modules on the Instrument Using a CF-card](#)

[Installing Licenses for Instrument Software](#)

[Moving Instrument Licenses](#)

[Instrument Service Information](#)

[Enhancements Log](#)

Installing Software Modules on the Instrument

BZ-5503 can be used for updating or upgrading new software applications on your instrument. It can even downgrade to specific software versions if required by type approval authorities. Using BZ-5503, you can also install licenses for the specific applications; and, if you have hardware version 1 – 3, install your preferred language (with G4 hardware, all languages are pre-installed in the instrument). Installation requires a USB connection between BZ-5503 and the instrument.

BZ-5503 clearly indicates whether the new software version is an update (free of charge) or an upgrade (license fee).

To install software modules:

1. [Connect your instrument to BZ-5503.](#)
2. Select the instrument by clicking on the serial number in the INSTRUMENTS node.



3. Click the **Software** tab to see the table showing the installed versions of the software modules.

The software packages (available at the time) were copied to your PC when you installed BZ-5503. Later versions of these software packages may now be available on the Support site at www.bksv.com.

The 2250 software package consists of a number of software modules. All software modules are installed when you install a package – you cannot pick out a single module from a package and install it separately.

In general, it is recommended to keep your instrument updated with the latest software modules, please check the Support site on www.bksv.com at regular intervals. See [Type Approved Software Versions](#) below.

4. Select the 2250/2270 Software Package to install.

Select package to install		2250/2270 SW Package No. 26 2012-03-13	
Description	Currently installed	To be installed	
 Sound Level Meter Software BZ7222	3.3	4.0	
 Frequency Analysis Software BZ7223	3.3	4.0	
 Logging Software BZ7224	3.3	4.0	
 Enhanced Logging Software BZ7225	3.3	4.0	
 Signal Recording Option BZ7226	3.3	4.0	
 Reverberation Time Software BZ7227	3.3	4.0	
 Building Acoustics Software BZ7228	3.3	4.0	
 2-Ch. Building Acoustics SW BZ7229	3.3	4.0	
 FFT Analysis Software BZ7230	3.3	4.0	
 Tone Assessment Option BZ7231	3.3	4.0	
 Noise Monitoring Software BZ7232	3.3	4.0	
 Sound Intensity Software BZ7233	3.3	4.0	

5. If you are installing on an instrument with hardware version 1 to 3, select up to three languages (in addition to English) for the user interface.
If you are installing on an instrument with hardware version 4, no language selection is possible – all available languages are installed automatically.
6. Click **Install**.

Warning:

Do not interrupt the installation process.

The installation will take several minutes. The instrument will automatically restart when the installation is finished.

Note:

- If you are upgrading software, your preferences are maintained, but you will have to
 - adjust the touch screen using Main Menu > Preferences > Display Settings > Adjust Touch Screen
 - select you preferred language and time zone using Main Menu > Preferences > Regional Settings.
- If you are downgrading software, templates are reset (i.e., overwritten)

A valid license is required to run an application on the instrument. If you have purchased your instrument together with the application(s), the relevant license(s) will come pre-installed on the instrument. If you purchased a separate application for your instrument, you must install the license on the instrument.

Troubleshooting

If you have experienced serious problems in starting and using the software, you have tried the Reset Options described in the Troubleshooting section of the User Manual for the instrument, and you are not able to install software using the USB, then you can [install instrument software using a CF-card](#).

Templates

The templates for user "2250" or "2270" will be updated when installing/upgrading 2250/2270 software. **You have to manually update the templates for the other users afterwards.** This is done by copying templates from user "2250"/"2270" to the other users:

1. Select the instrument by clicking on the serial number in the INSTRUMENTS node.
2. Select the **2250** or **2270** tab.
3. Press **<Ctrl +A>** and, with the mouse pointer in the highlighted area, right-click and select **Copy**.
4. Select a user's tab.
5. Press **<Ctrl +A>** and, with the mouse pointer in the highlighted area, right-click and select **Paste**.
6. Repeat for other users.

Type Approved Software Versions

National bodies that type approve sound level meters generally approve specific versions of the sound level meter software. Whenever Brüel & Kjær revises software an extension of the approval is applied for. However, new versions can be published on the Support site at www.bksv.com before the new approvals are finalised. If use of your instrument relies on the use of an approved version you should check with your type approving authority, or with your local Brüel & Kjær representative, before installing a new version.

If you need to install a previous version of a software module, then select the Software Package containing the version of the software module required and install it as described above.

Installing Software Modules on the Instrument Using a CF-card

Note:

This topic applies only to hardware versions 1, 2 and 3. For version 4 hardware, please refer to Chapter 9 of the Type 2250/2270 User Manual (BE1713). You can see the hardware version by displaying the *About* tab of your instrument's help.

If you cannot install software using the USB, and have have tried the Reset Options described in the Troubleshooting section of the User Manual for the instrument, then you can install the instrument software using a CF-card.

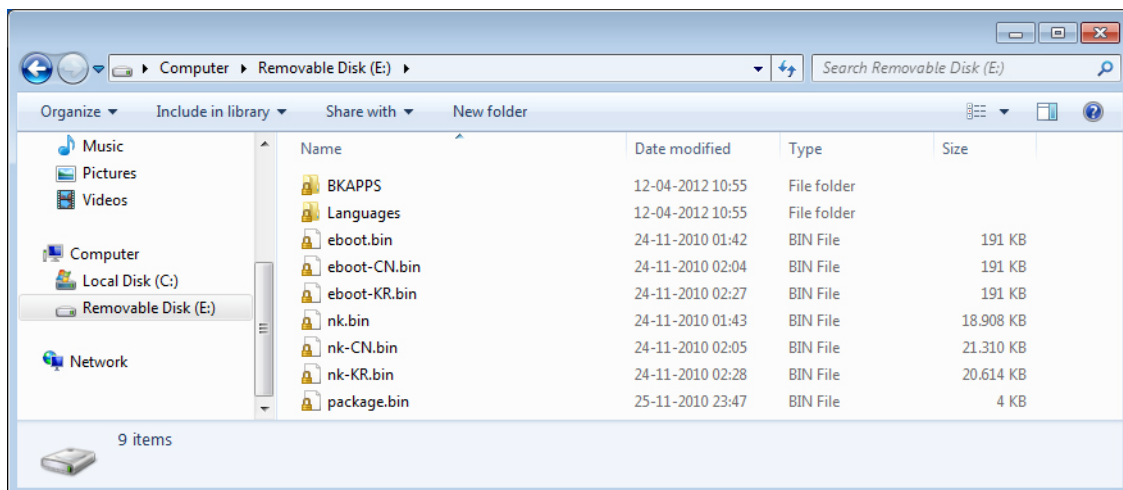
Procedure for Hardware Versions 1, 2 and 3





1. Locate the required 2250/2270 Software Package in the folder where you have installed BZ-5503. The default path is:

32-bit Windows® 7 and XP: C:\Program Files\Common Files\Bruel and Kjaer\SWP\SW#

64-bit Windows® 7: C:\Program Files (x86)\Common Files\Bruel and Kjaer\SWP\SW#

2. Copy the **content** of the required 2250 Software Package to the root of an empty CF-Card (size between 64 and 512 MB and formatted with FAT 16). You should now have the following layout:



3. Power off the instrument and insert the CF-card in the CF slot on the instrument
4. Press and hold down the **Commentary**  and **Save**  pushbuttons, while switching on the instrument. The Maintenance Mode initial screen will be displayed
5. Press the **Accept**  pushbutton to "Update 2250/2270 Software". This takes a few minutes
6. Then press the **Accept**  pushbutton to Reset to Default Settings. This will install the rest of the applications and reset the instrument to the SLM template, with no transducer selected. This takes a few minutes
7. When done, the instrument initialises in SLM mode. Please adjust the touch screen in **Preferences, Display Settings**.
8. Select your transducer again in the topmost line of the Transducers display.
9. Remove the CF-Card.

Installing and Deleting Licenses for Instrument Software

Install Licenses

See [To Install a License for an Instrument Application](#).

Delete Licenses

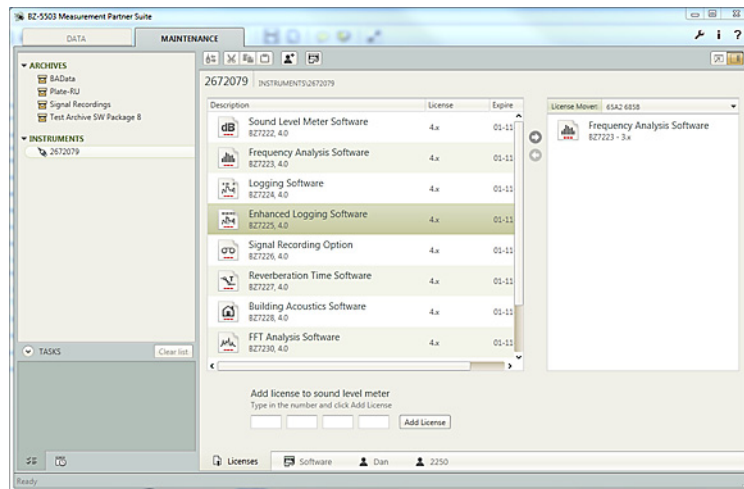
You can limit the range of functionality of your instrument (for example, when lending the instrument out to other users) by deleting the licenses of certain software modules. Delete a license by right-clicking the software module in question in the list and selecting **Delete**.



You install the license again as described above using the 16-character license code from the License Certificate. (You received the License Certificate from Brüel & Kjær together with the software module.)

Moving Instrument Licenses

If you have more than one instrument, you may want to share application software between instruments of the same type. You can do this by moving the license from one instrument to another by using *Move Instrument Licenses*, together with the License Mover VP-0647. If you, for example, lend out your Type 2250, you may want to temporarily 'un-install' applications not needed. This can be achieved by moving the license of the application to License Mover VP-0647. When needed again, you move the license back to your Type 2250.

1. Connect the License Mover VP-0647 to a USB or Parallel Printer Port of your PC (the License Mover is a USB device as standard, but can be delivered as a parallel port device, please consult your local Brüel & Kjær representative) and connect your instrument to another USB port on your PC.
2. Go to the MAINTENANCE tab and select your instrument in the INSTRUMENTS node. The License Mover appears to the right of the list of installed software.



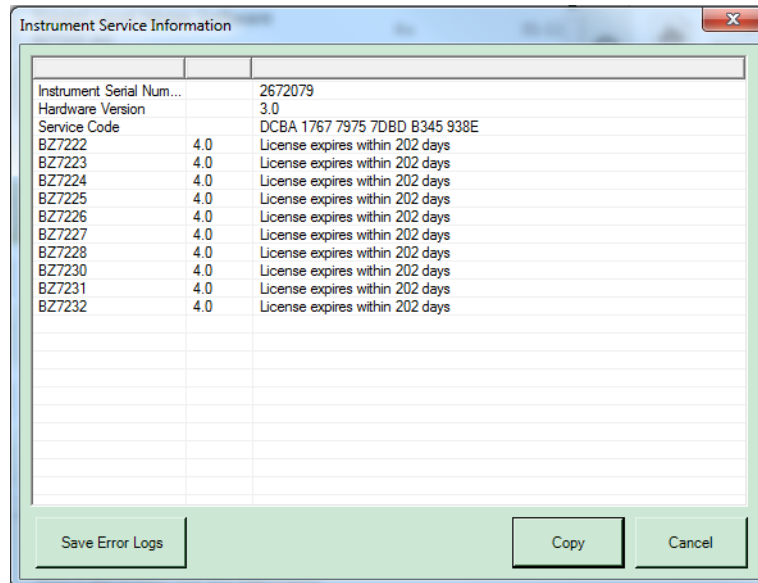
3. Select the license(s) that you want to move to or from the License Mover and click  or , as appropriate.

Note:

- You cannot move licenses with a limited availability (e.g., licenses expiring after a number of days).
- License version 3.x indicates that the license is valid for versions 3.1, 3.2, 3.3, etc., of the module, but not for version 4.0, for example.
- You cannot install a license again after it has been moved out from an instrument - you have to move it back again to make the module available.
- You cannot move licenses directly from one instrument to another; you have to move them to a License Mover VP-0647 first and then to the other instrument afterwards.
- You can also move licenses between two License Movers VP-0647.
- The License Mover VP-0647 can hold Type 2250, 2250 Light, MATRON 3 Light, 2260 and 2270 software licenses.

Instrument Service Information

Should you encounter any problems with your instrument, the Service Information window provides you with all the information you will need to enable you to contact Brüel & Kjær:



This includes:

- The serial number of your instrument
- Hardware information for your instrument
- Software information for your instrument

The dialog can be accessed by right-clicking on the instrument in the INSTRUMENTS node and selecting **Service Info**.

The window can be copied to your clipboard, then pasted into an email and sent to your local Brüel & Kjær representative.

If you experience severe problems with your instrument, then use **Save Error Logs** to retrieve error logs from the instrument and save them on your PC. Then please zip these logs and send them to your local Brüel & Kjær representative to enable Brüel & Kjær support staff to deal with the problem.


Options

Click  to open the *Options* dialog, with tabs for:

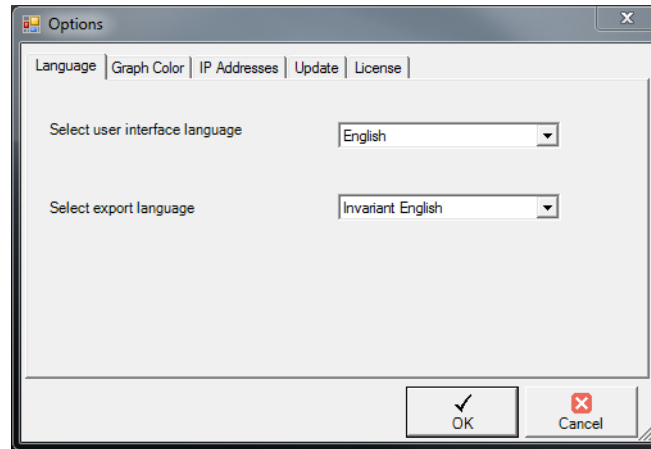
- [Language](#)
- [Graph Color](#)
- [IP Addresses](#)
- [Update](#)
- [License](#)

Note:

Clicking **OK** applies changes to all five tabs and closes the dialog.

Clicking  cancels changes to all tabs for which you have not clicked **Apply**.

Language



Select User Interface Language

Use this to select the language to be used for the User Interface.

Select Export Language

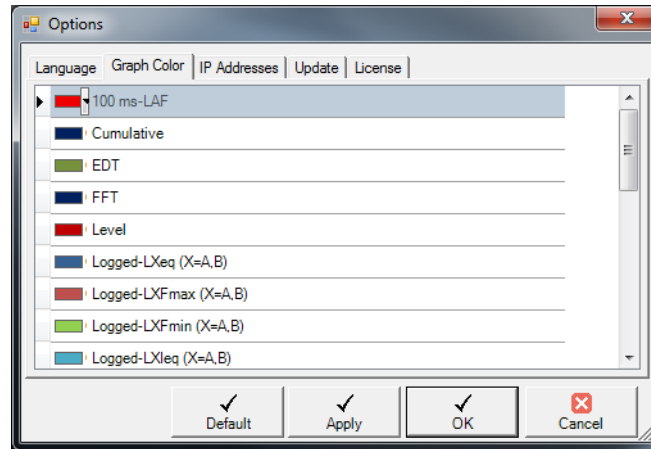
Use this to select the language to be used for export. You can use the export language to get parameters in your local language, for example, when exporting to Excel®.

Note:

If a program (or macro) is going to interpret the parameters, then we recommend that you select **Invariant English** from the drop-down list of export languages. This setting will output parameters in English and the names of the parameters will be kept over time from version to version of the program. This is not guaranteed for other languages, where the parameter names might change over time.

Once selected, click OK to save the changes or **Cancel** to cancel and close the dialog.

Graph Color



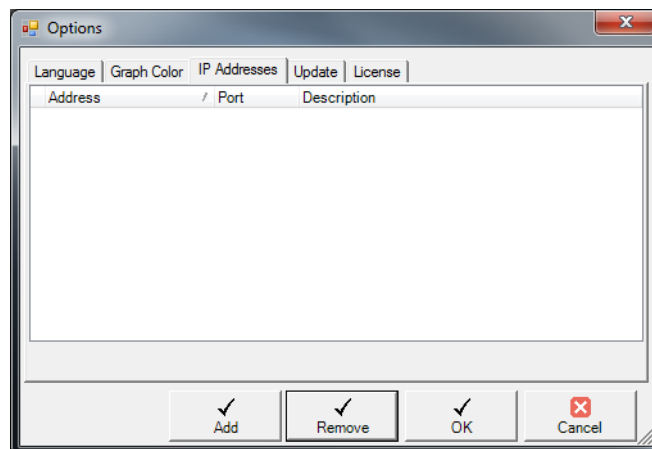
All parameters in graphs have a predefined color. Use this tab if you want to adjust the colors. Click on the color to open a palette with colors to choose from.

Click **Apply** to set the colors immediately on an open graph to view the result.

Click **Default** to reset all colors to their predefined settings.

Once selected, click **OK** to save the changes or **Cancel** to cancel any changes for which you have not clicked **Apply** and close the dialog.

IP Addresses



Use this for instruments that have a known IP Address.

Normally BZ-5503 can recognise Type 2250/2270 instruments on a Local Area Network; however, in some cases it is not possible, for example:

- If the instrument is located on another network, e.g., behind a router to be accessed through the internet. You should then insert the global IP address of the router on this tab. See also [Connect an Instrument Through a Router](#)
- If the instrument is located behind a GPRS or 3G modem with a global IP address. If the IP address is fixed, then you can insert the IP address here - otherwise you can insert an address to a DynDNS account, which resolves the address - see [Connect an Instrument Through a Router](#)
- If the instrument is located on a network highly protected by firewalls and a VPN, then it may be necessary to insert the IP address on this tab

Instruments on these addresses will automatically be visible in the connection list for Instrument View for online display.

Click **Add** to add an IP address and a description of the address.

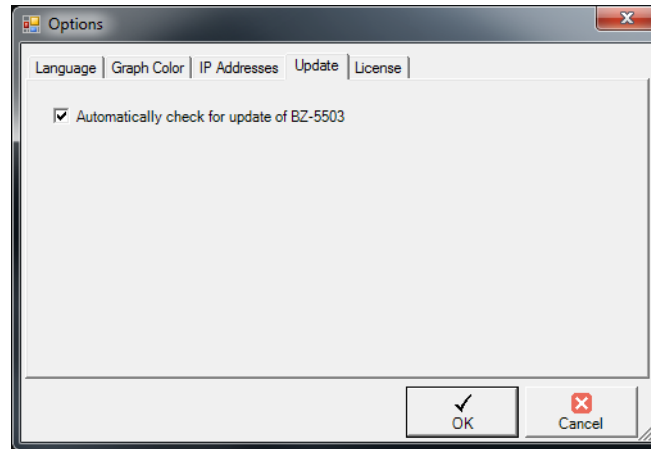
To edit addresses in the list, simply click on the content.

Use **Remove** to remove entries no longer in use.

Note:

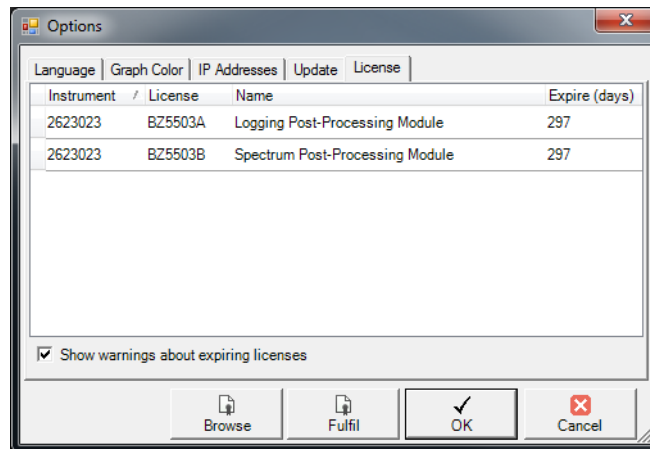
Entries no longer in use should be removed to prevent BZ-5503 from trying to connect to these addresses - as this can degrade the overall performance of the program.

Update



Check the checkbox if you want BZ-5503 to automatically check for software updates available on the Brüel & Kjær website. The check is performed when BZ-5503 starts up.

License



The **License** tab allows you to [fulfil your license](#) before first using the software and to see what license is being used.

You can also check *Show warnings about expiring licenses* if you want to be informed before your license expires.

Release Log

The release log provides information on new features that have been included and bugs that have been resolved in the latest versions of the software.

Version 4.0

- New User Interface
- Instrument and Archive views are combined into one view named Data
- Smaller installation size
- Support for Type 2250/2270 Generation 4 hardware
- Import/Export to Pack-and-Go format
- Ability to add/edit markers on profiles (licensed feature)
- Ability to add annotations on project, profile (region) or on sample. (some parts are licenses)
- Ability to send email with data directly from BZ-5503
- Ability to connect to multiple instruments behind same hostname/IP address
- Ability to attach any kind of document
- Export regions of profile
- Added support for GPS notes
- View GPS coordinates in Google Maps
- Added support for new weather parameters
- Calculation of markers (licensed feature)
- Add/Subtract spectra (CPB) (licensed feature)
- Resumable downloads (requires instrument software. Ver 4)
- Schedule downloads from instrument (licensed feature)
- Conversion of 1/3-octave spectra to 1/1-octave (licensed feature)
- Post-weighting of spectra (licensed feature)
- Marker and Report wizard (licensed feature)
- Added ability to hide archive from tree
- Removed PSTN Dial-up capability from application
- Improved stability

Version 3.9

- Supports Windows[®] 7, 32-bit and 64-bit
- USB driver is verified by Bruel & Kjaer Sound & Vibration Measurement and changed from Jungo to BKS SV, Bruel & Kjaer Virtual Driver
- Supports display and export of LN values, StdDev and Lep,d
- Licenses can be installed via LAN or modem connection

Version 3.8

- Supports data from 'Enhanced Logging SLM' template
- Supports display of tolerance window results in FFT data
- Location ID from 2250/70 displayed in 'Instrument View' and 'On-line Display'
- Checks automatically for new versions that are available for download
- Export of multiple and small projects is quicker
- 2250 SW Packages are installed in new folder: 'C:\Program Files\Common Files\Bruel and Kjaer\SWP'

Version 3.7

- Supports Noise Parameters
- LCpeak added as column in Project List View
- IP addresses can be specified as text for use with DynDNS

- Supports LAN connection using one port only
- Supports selection of one or more on-line displays without need for selecting instrument in Instrument Viewer first
- Modem dial-up connects to instrument without selecting it in Instrument Viewer - you can then choose to select the instrument in Instrument Viewer or in ON-line display
- Error Logs in instrument can be transferred to PC

Version 3.6

- Supports Tone Assessment results from 1/3-octaves

Version 3.5

- Supports Building Acoustics data and export to Type 7830
- Manual Refresh of LAN connections

Version 3.4

- Supports 2270
- Supports Tone Assessment results from FFT
- Supports connection via LAN
- Content of List View can be copied to clipboard

Version 3.3

- Supports export of FFT data to Types 7815 and 7820 and to PULSE ASCII format
- The Data Viewer supports display of reverberation time and FFT data
- The Data Viewer supports logging data of any size
- The Data Viewer profile zoom facilities have been enhanced
- The Data Viewer supports Copy Graph and Copy Data to clipboard

Version 3.2

- Supports MATRON 3 Light

Version 3.1

- Supports export of Frequency Analysis and Reverberation Time data to Type 7830

Version 3.0

- Supports 2250 Light
- Supports installation of specific languages for user interface in instrument
- Supports export of Reverberation Time data to Type 7830/31
- New Archive List View with additional information and thumbnails
- Archive Search facility
- Built-in data viewer

Index

Numerics

100 ms Resolution of Markers	56
2250 Software Package	76

A

About BZ-5503 Software	1
Add Annotation	53
Add Archive	38, 50
Add Attachment	39
Add Note	39, 53, 69
Add spectra	71
Adding	
Annotations and Attachments	65
Adding a Marker	54
Adding a Report	54
Adding Attachments and Annotations	53
Additional Settings for DDNS	26
Annotations	53, 65
Application Installation	8
Application License Installation	9
Archive	36
Archive List View	37
Archive Tree View	37
Archives	19
Add	50
Backing Up	19
Connect to Existing	50
New	50
Archives Node	37
ATTACHMENTS	66
Attachments	53, 65
Axis scaling	59

B

Back Up Archives	19
Building Acoustics	48
Building Acoustics Spectrum View	61

C

Calculations	71
CF-card	40, 76
CF-cards	51
Clone Templates	21
Color	82
COMMENTARIES	66
Connect an Existing Archive	50
Connect an Instrument	7
Connect Instruments	29
Connect to an Instrument Through a Router	24
Context Menus	29, 38
Add Archive	38
Add Attachment	39
Add Note	39
Create Job Folder	30, 39
Create User	30, 38
Delete	39
Disconnect Archive	39
Disconnect Instrument	30
Export	39

Hide	39
On-line Display	30
Properties	39
Show	39
To Archive	30
To Instrument	39
View in External Window	39
Context Menus Specific to BZ-5503 Software	30, 38
Disconnect Instrument	29
Control an Instrument via LAN/WLAN	13
Copy	64
Data	53
Graphics	53
Copy entire table	64
CPB Spectrum View	59
Create a New Archive	50
create a User/	41
Create Job Folder	30, 39
Create Master Excel Files	15
Create New Users on your Instrument	17
Create User	30, 34, 38
in Archives	41
Create Users on Instrument	34

D

Data View	3
Data Viewer	52
DDNS	26, 27
Delete	39, 64
Delete License	77
Deleting Licenses	77
Detection Problems	23
Disconnect	
Archive	39
Disconnect Instrument	30
Disconnect Instruments	29

E

Edit	64
Edit Note	69
Enable New User/Case	17
Evaluator Type 7820	1
Excel	46
Excel Master Files	47
Export	39
Export Data	14
Export Data to Excel	46
Export Region	55
Export region	64
Export to a Customized Master Excel File	16
Export to Qualifier	48
Export Wizard	42

F

FFT Spectrum View	59
Filtering Data for Export	16
Fulfil License	6

G	
Google Maps	69
GPRS/3G Router	25
GPS Note	69
Graph Color	82
H	
Help	4
Hide	39
How to	5
Backup Archives	19
Connect and Instrument	7
Create Master Excel Files	15
Create New Users on Your Instrument	17
Export Data	14
Export to a Customized Master Excel File	16
Install an Application	8
Install an Application License	9
Switch Between Users/Cases	18
Transfer Data	10, 12, 13
Use Your Backup Again	19
I	
IMAGES	66
Import Pack-and-Go Files	20
Install an Application	8
Install an Application License	9
Install License for Instrument Software	77
Install Software Modules on the Instrument	73
Installing	
Software Modules Using a CF-card	76
Instrument	
How to connect	7
Instrument Service Information	79
Instruments	28, 29
Instruments Node	29
Internal Disk	31
Introduction to the Measurement Partner Suite	1
IP Addresses	83
J	
Join Recordings	64
L	
LAN	7, 23
Language	81
Licences	77
Deleting	77
License	85
License Fulfilment	6
License Installation for Application	9
License Mover	78
List View	29
Archive	37
Instruments	29
Local Area Network	23
M	
Maintenance View	4
Marker Attachments	67
Marker Table View	64
Markers	54, 64
100ms Resolution	56
Master Files	47
Measurement Partner Suite	1
Menus	29, 38
Moving Instrument Licenses	78
N	
Networks	22
New Archive	50
New features by version	86
New User	17
Noise Explorer Type 7815	1
NOTES	66
Notes Window	69
O	
On-line Display	30, 35
Options	80
Graph Color	82
IP Addresses	83
Language	81
License	85
Update	84
Organise Templates in Archives	21
P	
Pack-and-Go	14
Pack-and-Go Files	20
Pausing Data Transfer	11
Play	54, 64
Port Numbers	26
Profile View	54
Project Annotations and Attachments	65
Properties	39
Protector Type 7825	1
Q	
Qualifier Type 7830	1, 48
R	
Release Log	86
Removable Disk	51
Remove Time Reports	55
Report	54
Reporting	16
Reverberation Time Spectrum View	60
Router	24
Router Setup	24
S	
Sample Annotations and Attachments	67
Save Recording	64
Scaling x- and y-axes	59
Schedule	31
Schedule Data Transfer	31
SD-card	31, 40
SD-cards	51
SDHC-cards	51
Search	68
Select Export Language	81
Select User Interface Language	81
Service Information	79
Setting up	
Multiple Instruments Behind a Router	25
Router	24
Settings for Export to Excel	44
Show	39
Show/Hide Side Bar	53
SIGNAL RECORDINGS	66
Software Modules	73
Spectrum View	59
Statistics View	62
Subtract spectra	71
Switch Between Users/Cases	18

T	
Table View.....	58
Templates.....	21, 75
To Archive	30, 31
To Instrument	39
Tone Table View	63
Transfer Data	
from the Archive to the Instrument	40
from the Instrument to the Archive	31
LAN or WLAN.....	13
SD- or CF-card.....	12
USB.....	10
Tree view	
Archive	37
Instruments	29
Type Approved Software Versions.....	73, 75
U	
Unzoom	55
Update.....	84
USB.....	74, 76
USB Cable to PC.....	7
USB Connection.....	51
Using Your Backup Again	19
V	
View in External Window.....	39
View Measurement Data	39
VP-0647	78
W	
Wireless LAN.....	23
WLAN	7, 23
Z	
Zoom	55
zoom.....	60