

PRODUCT DATA

Measurement Partner Suite — BZ-5503 BZ-5503 from software version 4.0

The quickest route from measurement data to finished report

Modular and highly optimized for post-processing of measurement data, Measurement Partner Suite BZ-5503 provides the essential toolbox of post-processing tools for the busy noise and vibration professional.

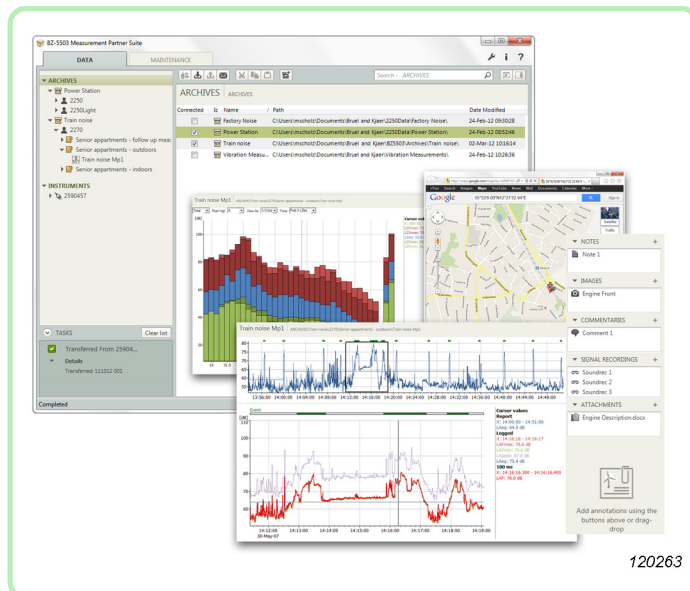
The powerful combination of Hand-held Analyzer Type 2250, 2250 Light or 2270, with its vast range of sound and vibration applications, coupled with Measurement Partner Suite, equips you for any measurement job.

In its basic configuration as the included standard PC software, Measurement Partner Suite provides an advanced and modern viewing and maintenance platform for your hand-held analyzer.

In addition, valuable post-processing modules are available on a time-limited subscription basis. Measurement Partner Suite is constantly being developed for new functionality and currently, the following optional post-processing modules are available:

- Logging Module BZ-5503-A
- Spectrum Module BZ-5503-B

These modules are specifically designed to save you time in post-processing by helping extract what you need quickly and efficiently from your measurement data.



Uses, Features and Benefits

Uses

- Data download, viewing and archiving
- Analyzer software maintenance
- Online display and remote access and operation
- In-office post-processing and export to other formats

Features

- Import, archive, display and export
- Overview of archives and users
- Detailed view of data
- Exporting of annotations (notes, metadata, etc.)
- "Pack and Go" for email or exchange of archives
- Resumable downloads (Type 2250/70 software version 4)
- View GPS coordinates in Google Maps™
- Logging Module (time-limited subscription) includes:
 - Export region from logging profile
 - Marker and Report wizard and spectrum view
 - Scheduled data download

- Spectrum Module (time-limited subscription) includes:
 - Post-weighting of spectra
 - Calculator function
 - Tone assessment (1/3-octave, FFT)
 - Conversion of 1/3-octave spectra to 1/1-octave

Benefits

- Compatible with all versions of the hand-held analyzer software (v. 1.1 and later)
- Subscription based for low risk
- Configurable to match your analysis and post-processing requirements
- Advanced Viewer free of charge when not subscribing to modules
- No penalty should your subscription expire
- Quick and easy post-processing modules
- Licensed according to instrument serial number – no need for dongles

Description

You have just been out in the field performing your measurements and are now back in the office ready to write your report – or so you think. Often there is a lot more work to do before you can even consider preparing a report. From downloading the data to extraction of results and documenting your work, the post-processing phase can be time-consuming, labour-intensive and sometimes risky in regards to potential errors. In some instances, the post-processing and reporting phases of a project are actually longer than the measurement itself.

As post-processing of data is just as important as data acquisition when performing an environmental measurement project, Brüel & Kjær continually strives to provide you with integrated hand-held analyzer solutions that simplify all phases of your work. Measurement Partner Suite is the latest offering – helping you save valuable man-hours during post-processing and reporting, freeing up time for other projects and ultimately making your quotes more competitive.

Based on the principles of intuitiveness and ease-of-use found in all of Brüel & Kjær's hand-held analyzer applications, Measurement Partner Suite BZ-5503 is the next step in the evolution of Utility Software BZ-5503. To ensure full compatibility, Measurement Partner Suite is backwards- and forward-compatible with all instrument software and hardware versions, so all your data can be viewed and exported.

Subscription

It is an uncertain world, and without a long pipeline of projects, it can be difficult to justify a large investment in new equipment and PC software. To accommodate this fact, Measurement Partner Suite offers valuable data analysis and post-processing functionality on a time-limited subscription basis. This reduces the size of the investment considerably over the short term and allows you to adjust your investment up and down – only pay for what you need, when you need it. If your subscription products lapse, there is no penalty, you can simply re-subscribe at a later date, should you wish to.

And remember, for those who do not wish to subscribe, Brüel & Kjær provides Measurement Partner Suite's basic configuration with your hand-held analyzer as standard and free of charge. This configuration provides data archive, preview and export capabilities as well as software maintenance and remote online display.

To stay up-to-date on the latest updates, videos and post-processing modules to BZ-5503, bookmark Brüel & Kjær's website at www.bksv.com/ENV. Then contact your local Brüel & Kjær representative to subscribe to the module or modules of your choice.

Using Measurement Partner Suite

Measurement Partner Suite enables you to:

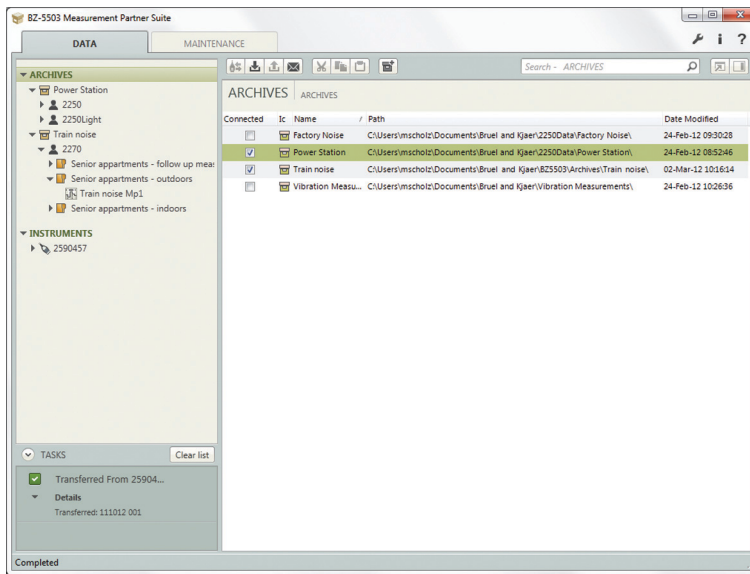
- Set up and control your hand-held analyzer from a PC
- Download data from the analyzer
- Manage and archive data from the analyzer
- View data in archives
- Update the software in the analyzer
- Install licenses for use of software modules in the analyzer
- Remotely view online displays
- Post-process data (with a license for a BZ-5503 post-processing module)
- Export to other post-processing and documentation tools like:
 - Evaluator™ Type 7820 for assessing environmental noise
 - Protector™ Type 7825 for assessing workplace noise
 - Qualifier™ Light Type 7831 for documenting reverberation time measurements
 - Microsoft® Excel® or Word

Easy, Integrated Retrieval, Viewing and Management of Data

After you are back from your measurements, a typical workflow with Measurement Partner Suite could look something like this:

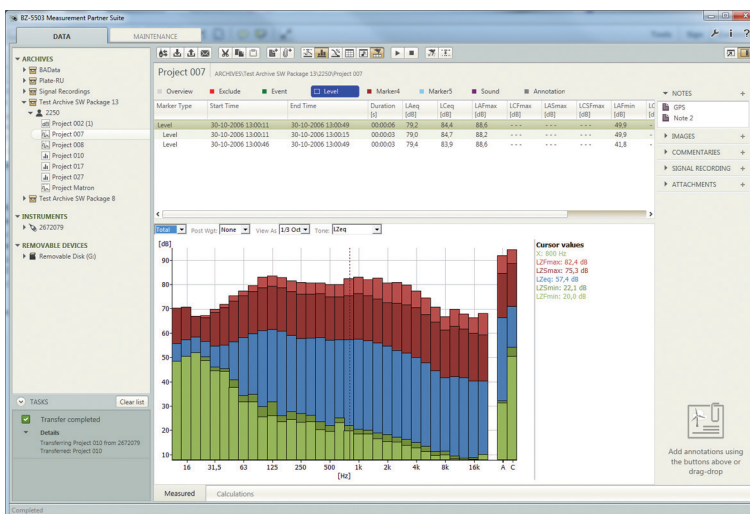
1. Connect your analyzer to Measurement Partner Suite on a PC, either using the supplied USB cable or via wired/wireless LAN or 3G connection. Alternatively, if you have saved your data on a memory card, you can insert the memory card in a card reader.

Fig. 1
Transfer and archive data quickly and easily



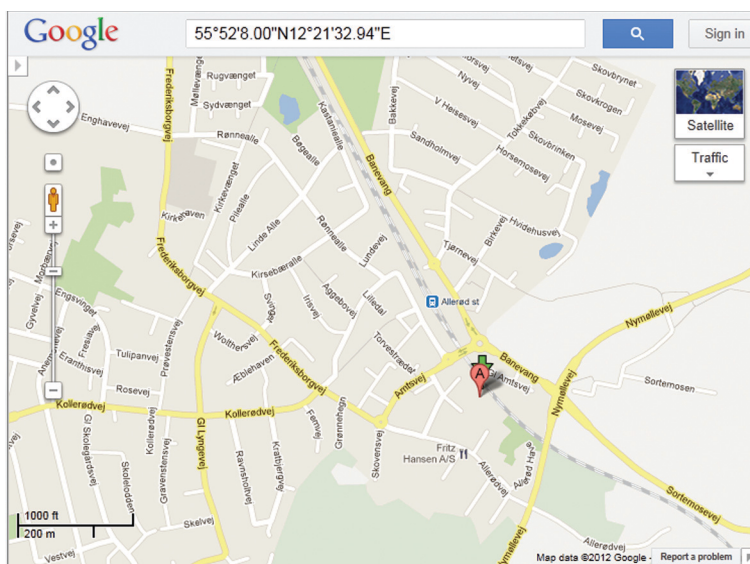
- Download your data to an archive of your choice.

Fig. 2
Scroll through measurements in a project and view the individual data in graph format



- View the data and decide which post-processing tasks are required to extract the results you need for your report.

Fig. 3
Viewing GPS coordinates in Google Maps™

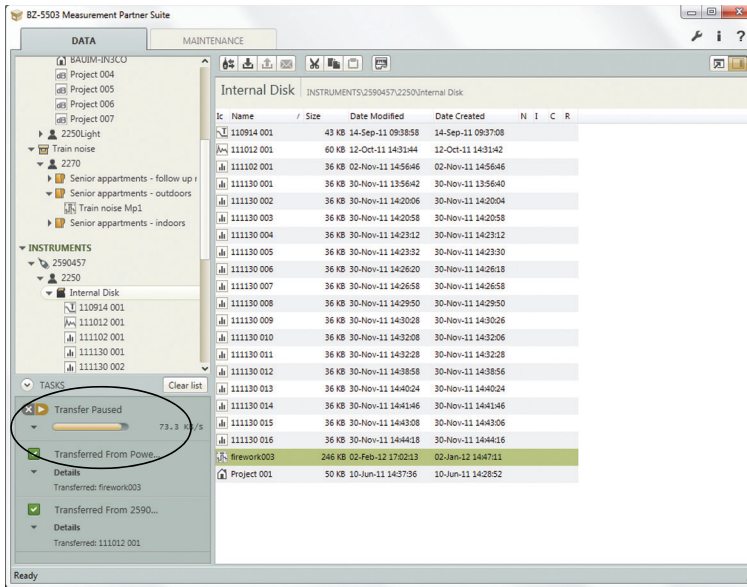


- Open Text Annotations and view the GPS coordinates of the measurement points in Google Maps™.
- You can then either:
 - Perform post-processing using a licensed Measurement Partner Suite post-processing module.
 - or
 - Export to Brüel & Kjær environmental PC software or Excel®.
- Export your graphs and figures to your standard report format.

If you have subscribed to one or more Measurement Partner Suite post-processing modules, you will have already saved time in analysing your data.

Resumable Downloads

Fig. 4
Data download has been paused. Press the play button to restart the download



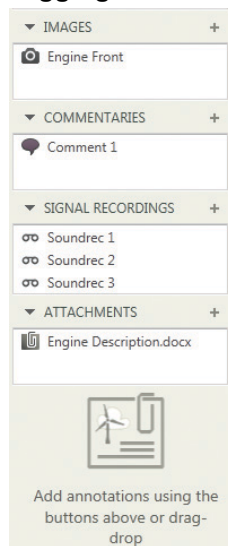
Avoid the risk of having to restart downloads of large measurement projects due to an unstable Internet connection. With BZ-5503's resumable download feature, the software automatically pauses and restarts downloads when the connection fails. It is also possible to manually pause and/or restart as needed.

Note: This feature is only available with software version 4 and only when transferring data from your analyzer to an archive.

Post-processing Modules – Available as Time-Limited Subscription

Logging Module BZ-5503-A

Fig. 5
Easily add attachments or annotations



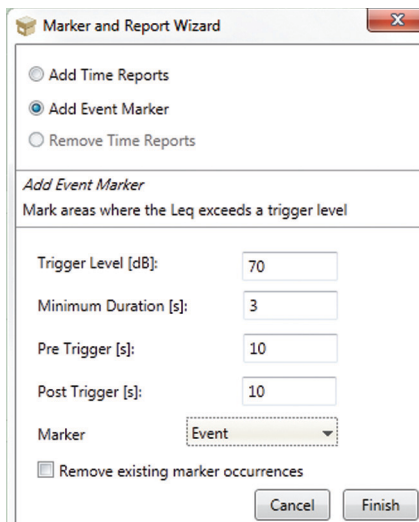
Logging Module BZ-5503-A includes a set of tools for post-processing of measurement data collected with Logging Software BZ-7224, Enhanced Logging Software BZ-7225 or Logging Software for 2250 Light BZ-7133.

Often, only selected parts of a logging profile are relevant for analysis and sometimes marking a logging profile during a measurement is not all that practical. Maybe in retrospect, you should have set the report period differently. With Logging Module BZ-5503-A, you can effectively and quickly identify and analyse the important parts of a logging profile by using the Export Region feature and advanced report period and marker functionality. With Measurement Partner Suite, searching through large amounts of data in Excel[®] is now a thing of the past.

Add Attachments or Annotations

Thoroughly document your measurement data by attaching photographs and documents to your measurement data. Create notes and attach to data projects, Job folders, samples of a profile or templates.

Fig. 6
Marking a logging profile using the Marker and Report wizard

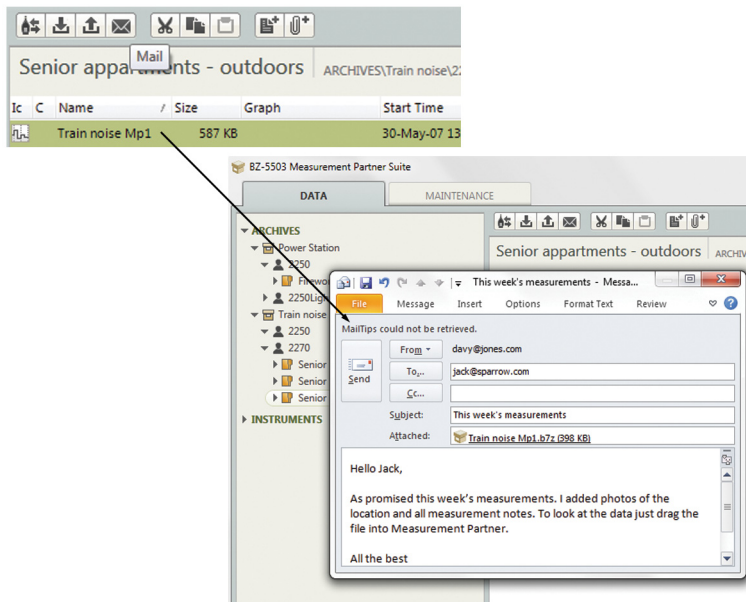


Marker and Report Wizard

Using the Marker and Report wizard, you can add an exclude, event, level, sound or user-defined marker (can also be done by right-clicking on a profile). In the Marker table, view a whole range of parameters associated with this marker (for example, L_{Aeq}).

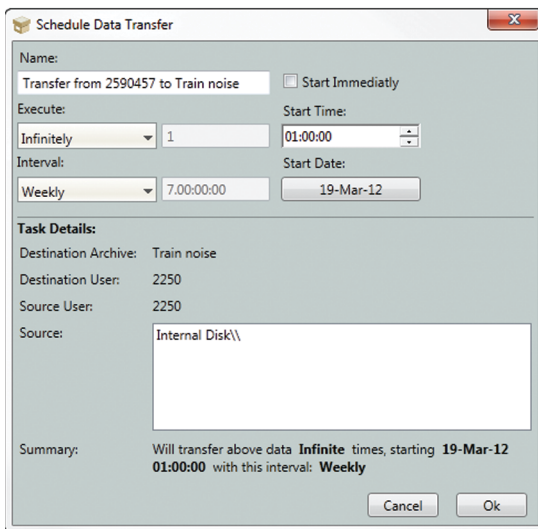
The wizard also allows you to redefine the measurement data's report period as many times as needed. Report periods can be any length that does not exceed the duration of the measurement.

Fig. 7
Pack and Go feature.
To email data, just select a file, click Mail, enter the receiver information and click Send



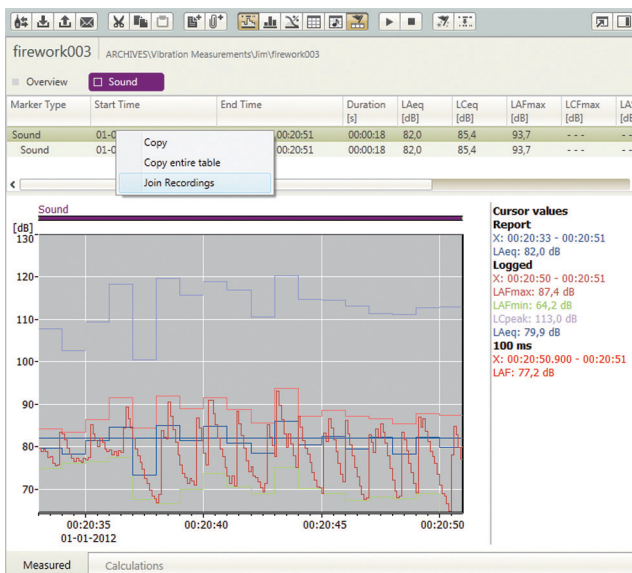
Share Data Using “Pack and Go”
Sharing data with your colleagues could not be easier with Measurement Partner. Simply pack your data using the Pack and Go feature and send the package via email or transfer it in other ways.

Fig. 8
Scheduled data transfer



Schedule the Transfer of Data
Remotely transfer your finished measurement projects from your analyzer to Measurement Partner at predefined intervals using the Scheduled Download feature.

Fig. 9
Combine signal recordings



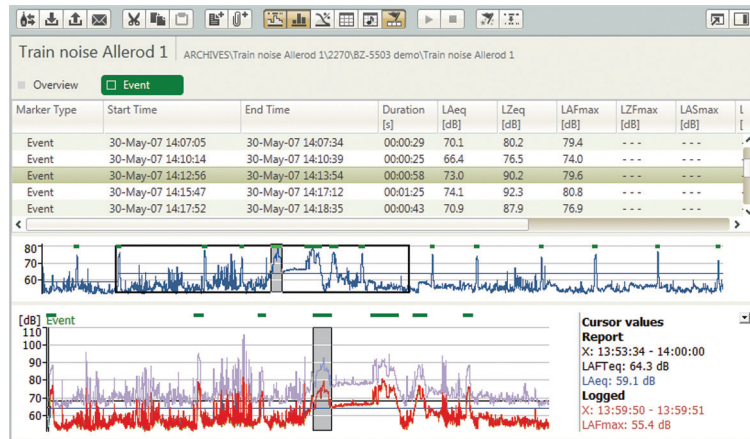
Join Signal Recording WAV Files
Your analyzer stores signal recordings as WAV files, which you can join to create one single WAV file for archiving, sharing and playback using the Join Recordings feature. The file can be also be used for further post-processing in other programs such as Brüel & Kjær’s PULSE Multi-analyzer.

Spectrum Module BZ-5503-B

Spectrum Module BZ-5503-B includes a set of tools for post-processing of measurement data collected with Frequency Analysis Software BZ-7223 and Logging Software BZ-7224, Enhanced Logging Software BZ-7225 or Logging Software for 2250 Light BZ-7133.

Sometimes in the post-processing phase of a measurement project, you need to adjust your frequency data in respect to weighting or resolution. With the Spectrum Module, tasks such as converting a 1/3-octave spectrum to 1/1-octave spectrum are done in one mouse click, as is post-weighting of a spectrum. Additionally, simple spectrum calculations, such as subtraction of background noise, can be performed instantly with the module's built-in Calculator. Even tone assessment is automatically performed.

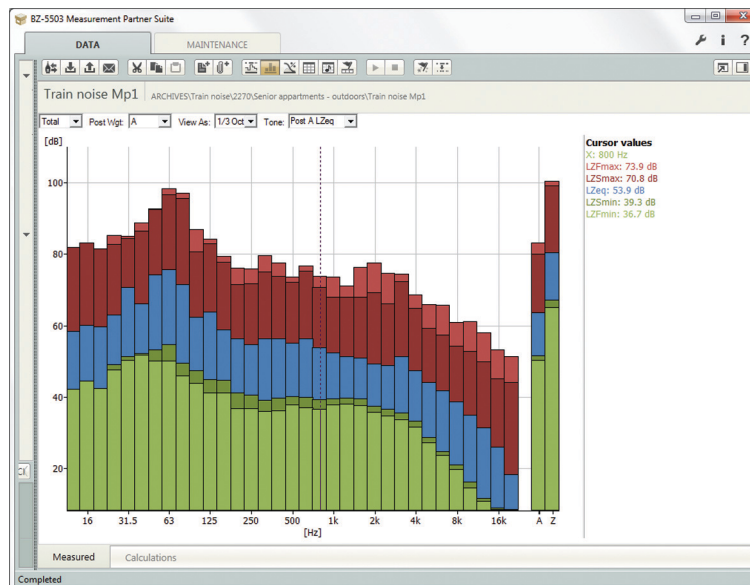
Fig. 10
View spectra markers



View Spectrum for Marker Periods

Easily view and export pre-defined markers (defined during or after the measurement) in the spectrum display. View and scroll through the list of markers while viewing both profile and spectrum.

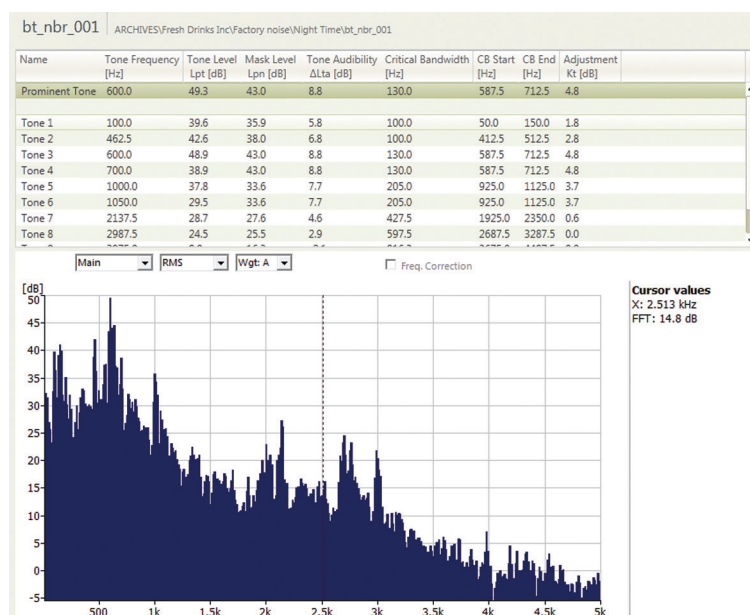
Fig. 11
Frequency weighting added to spectra within BZ-5503-B



Post-weighting of Spectra

Add frequency weighting to your spectra if they have been collected with Z-weighting during the measurement and view in the spectrum display.

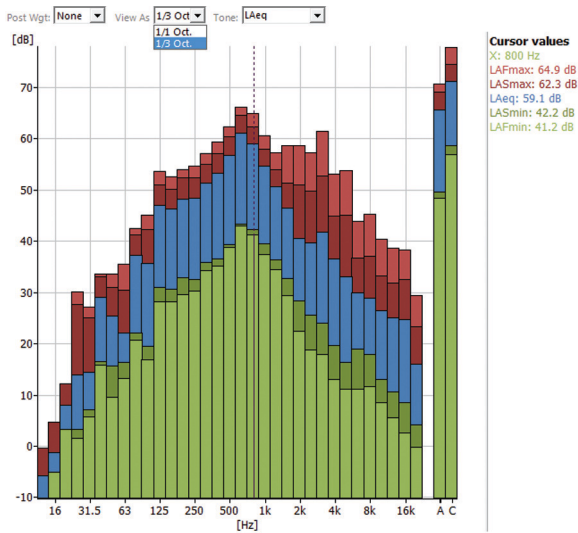
Fig. 12
Perform tone assessment



Tone Assessment

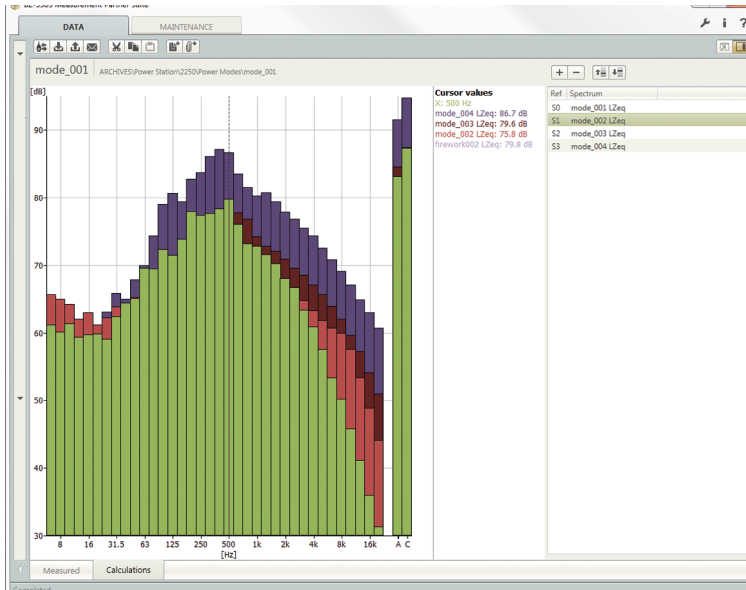
Perform tone assessment on FFT or 1/3-octave spectra and view complete tone assessment details in the Tone Table. Prominent tones are automatically identified.

Fig. 13
Convert 1/3-octave spectra to 1/1-octave



Convert 1/3-octave Spectra to 1/1-octave Spectra
Convert your 1/3-octave spectra to 1/1-octave spectra for viewing and export with just one click.

Fig. 14
Select the Calculations tab to use the Calculator panel where you can perform basic spectrum calculations



Built-in Calculator
Perform basic spectrum calculations using the Calculator panel. For example, subtract background noise from a noise level measurement or add numerous individual spectra together to ascertain the combined noise spectrum.

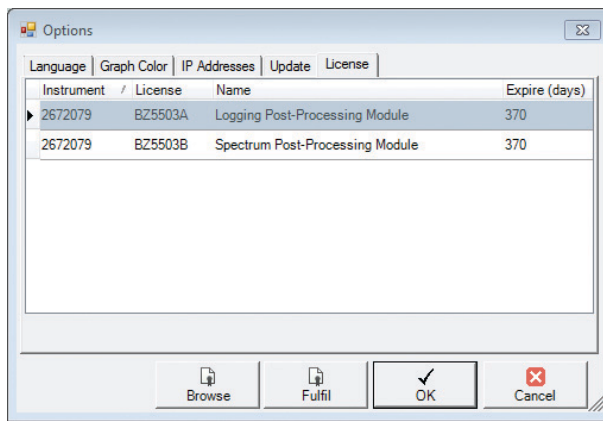
Licensing System

Measurement Partner Suite bases its licensing system on instrument serial numbers. This eliminates the need for dongles or locking the license to PC host IDs. License files can be copied to any PC where Measurement Partner Suite is installed. Each subscription product relates to one instrument only, so if you have two analyzers (for example), both requiring the Logging Module, then you need to purchase two Logging Module subscription products.

Each license type expands the post-processing functionality of your software. And while any data measured with a hand-held analyzer can be processed, you only need to subscribe to those Measurement Partner Suite post-processing modules that are relevant for the individual analyzer. For example, if you have a hand-held analyzer you use only for building acoustics measurements, then it may not be necessary to subscribe to any of the current modules for that instrument.

Each license file, one for each module installed on a single analyzer, can be reviewed in the Options window as shown in Fig. 15.

Fig. 15
License tab of the Options window where all licenses can be viewed, managed and fulfilled



In the user interface, all licensed features (buttons, tasks, tabs, etc.) are enabled, while unlicensed features are disabled (greyed out). Functionality is enabled as long as the specific license is valid. As a license nears its expiry date, a warning is shown during start-up. Contact your Brüel & Kjær representative to renew your subscription.

Specifications – Measurement Partner Suite BZ-5503

BZ-5503 is included with Types 2250, 2270 and 2250 Light (referred to as Type 2250/70 here) for easy synchronisation of setups and data between the PC and hand-held analyzer. BZ-5503 is supplied on ENV DVD BZ-5298

PC REQUIREMENTS

Operating System: Windows® 7 or XP (both in 32-bit or 64-bit versions)

Recommended PC:

- Intel® Core™ 2 Duo
- Microsoft® .NET 4.0
- 2 GB of memory
- Sound card
- DVD drive
- At least one available USB port

ON-LINE DISPLAY OF TYPE 2250/2270 DATA

Measurements on Type 2250/2270 can be controlled from the PC and displayed on-line with the PC, using the same user interface on the PC as on Type 2250/2270

Display: 1024 × 768 (1280 × 800 recommended)

DATA MANAGEMENT

Explorer: Facilities for easy management of analyzers, Users, Jobs, Projects and Project Templates (copy, cut, paste, delete, rename, create)

Data Viewer: View measurement data (content of projects)

Synchronisation: Project Templates and Projects for a specific user can be synchronised between PC and Type 2250/2270

USERS

Users of Type 2250/2270 can be created or deleted

EXPORT FACILITIES

Excel: Projects (or user-specified parts) can be exported to Microsoft® Excel® (Excel 2003 – 2010 supported)

Brüel & Kjær Software: Projects can be exported to Predictor-LimA Type 7810, Noise Explorer Type 7815, Acoustic Determinator Type 7816,

Evaluator Type 7820, Protector Type 7825 or Qualifier (Light) Type 7830 (7831)

POST-PROCESSING

Measurement Partner Suite is a suite of modules, including post-processing tools for data acquired with Type 2250/2270. The following post-processing modules are available:

- Logging Module BZ-5503-A
- Spectrum Module BZ-5503-B

These two modules help to assess logging data and measured spectra, such as calculating contribution from markers on a logging profile or correcting spectra for background noise

TYPE 2250/2270 SOFTWARE UPGRADES AND LICENSES

The software controls Type 2250/2270 software upgrades and licensing of the Type 2250/2270 applications

INTERFACE TO TYPE 2250/2270

USB, LAN or Internet connection

USB Connection:

- Hardware versions 1 – 3: USB ver. 1.1
- Hardware version 4: USB ver. 2.0

LICENSE MOVER

To move a license from one analyzer to another use BZ-5503, together with the License Mover VP-0647. See the analyzer's user manual for details

LANGUAGE

User Interface in Chinese (People's Republic of China), Chinese (Taiwan), Croatian, Czech, Danish, English, Flemish, French, German, Hungarian, Japanese, Italian, Korean, Polish, Portuguese, Romanian, Russian, Serbian, Slovenian, Spanish, Swedish and Turkish

HELP

Concise context-sensitive help in English

Ordering Information

BZ-5503-A Logging Module
BZ-5503-B Spectrum Module

OPTIONAL ACCESSORIES

VP-0647 License Mover

TRADEMARKS

Microsoft, Windows and Excel are registered trademarks of Microsoft Corporation in the United States and/or other countries · Intel is a registered trademark and Core a trademark of Intel Corporation · Google Maps is a trademark of Google Inc.

Brüel & Kjær reserves the right to change specifications and accessories without notice. © Brüel & Kjær. All rights reserved.

